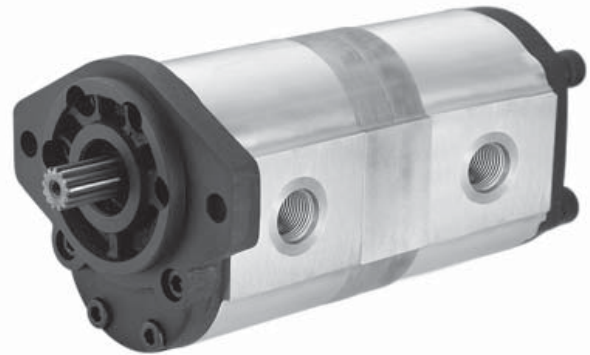


## Hydraulic Gear Pumps Double & Triple Pumps

Dynamic gear pump models GP-F10, GP-F20 and GP-F25 are available with features that allow pumps to be stacked to produce double and triple pumps from the base model. Technical data, including displacement sizes, working pressure, rated speed, etc. is as per the first pump position pump model. For example model GP-F20D-12/08-S9-C is a double pump with displacements of 12 and 8 cm<sup>3</sup>/rev (.73 and .48 in<sup>3</sup>/rev) rated at 2000 rpm and 2900 psi with a 9-tooth spline drive shaft and clockwise rotation.

### Recommended working conditions:

- FILTRATION: 25 micron or better
- OIL VISCOSITY: 6 - 200 cSt
- INLET PRESSURE: 12 - 32 psi absolute
- OIL TEMPERATURE: -25° - 80° C (-12° - 175° F)
- AMBIENT -22° - 55° C (-8° - 130° F)



### Installation Data

Contact Dynamic for installation information on specific models. Custom stacked pumps can also be produced by special order. Consult factory for details.

**Ordering Example:** **GP** - **F20D** - **12** / **08** /  - **P** - **C**

Category	Series	Stack	Pump Sizes	Drive Shaft	Rotation
Gear Pump	F10 = SAE "AA" Mount F20 = SAE "A" Mount F25 = SAE "B" Mount	D = Double T = Triple	See displacement options below	See shaft options below	C = Clockwise A = Counter-Clockwise (viewed from shaft end)

### F10 - Disp. Options

Model	Displacement in <sup>3</sup> (cm <sup>3</sup> ) / rev
GP-F10-13	0.07 (1.3)
GP-F10-20	0.12 (2.0)
GP-F10-27	0.16 (2.7)
GP-F10-34	0.20 (3.4)
GP-F10-41	0.25 (4.1)
GP-F10-51	0.31 (5.1)
GP-F10-61	0.37 (6.1)
GP-F10-80	0.48 (8.0)
<b>F10 Shaft Options</b>	
P = 1/2" dia. Straight	

### F20 - Disp. Options

Model	Displacement in <sup>3</sup> (cm <sup>3</sup> ) / rev
GP-F20-04	0.24 (4)
GP-F20-06	0.36 (6)
GP-F20-08	0.48 (8)
GP-F20-10	0.61 (10)
GP-F20-12	0.73 (12)
GP-F20-14	0.85 (14)
GP-F20-16	0.97 (16)
GP-F20-20	1.22 (20)
GP-F20-25	1.52 (25)
GP-F20-30	1.83 (30)
GP-F20-32	1.95 (32)
<b>F20 Shaft Options</b>	
P = 5/8" dia. Straight	
P1 = 3/4" dia. Straight	
S9 = 9-tooth Spline	
S11 = 11-tooth Spline	

### F25 - Disp. Options

Model	Displacement in <sup>3</sup> (cm <sup>3</sup> ) / rev
GP-F25-22	1.34 (22)
GP-F25-26	1.57 (26)
GP-F25-34	2.07 (34)
GP-F25-39	2.38 (39)
GP-F25-43	2.62 (43)
GP-F25-51	3.11 (51)
GP-F25-60	3.84 (60)
GP-F25-70	4.27 (70)
GP-F25-78	4.76 (78)
GP-F25-89	5.43 (89)
<b>F25 Shaft Options</b>	
P = 7/8" dia. Straight	
S13 = 13-tooth Spline	