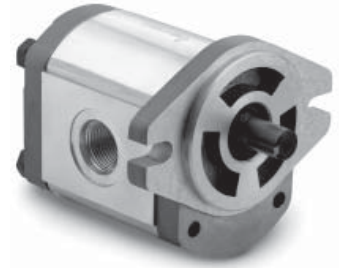


Hydraulic Gear Pump Model GP-F20



Constructed of an aluminium center section and cast iron end plates, model GP-F20 is a high pressure hydraulic gear pump with 11 displacement sizes from 0.24 - 1.95 in³/rev. (4 - 32 cm³/rev). The standard mounting flange is a SAE A - 2 bolt. Standard drive shaft is a 5/8" straight shaft with 5/32" key. Additional shaft options are available as outlined in the Ordering Example.

Recommended working conditions:

FILTRATION: 25 micron or better
OIL TEMP: -25° - 80°C (-12° - 175°F)

OIL VISCOSITY: 6 - 200 cSt
AMBIENT -22° - 55°C (-8° - 130°F)

INLET PRESSURE: 12 - 32 psi absolute

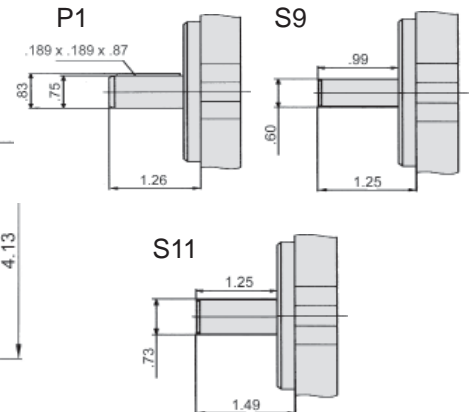
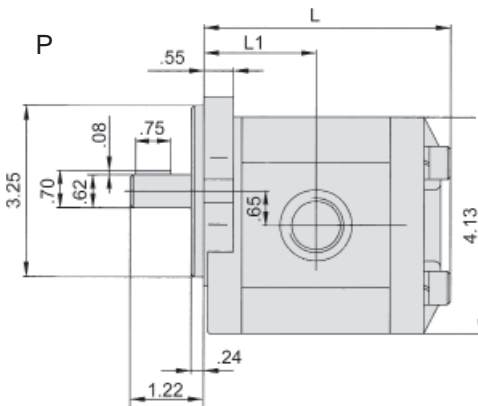
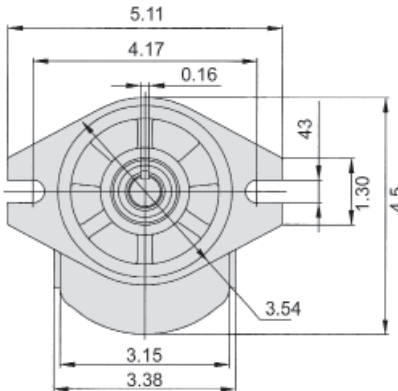
Technical Specifications

Model	Displacement	Pressure psi	Speed rpm		Weight lbs
	in ³ (cm ³) / rev		Rated	Max	
GP-F20-04	0.24 (4)	3650	2000	3600	7.80
GP-F20-06	0.36 (6)	3650	2000	3600	8.05
GP-F20-08	0.48 (8)	3650	2000	3600	8.25
GP-F20-10	0.61 (10)	3650	2000	3600	8.30
GP-F20-12	0.73 (12)	3650	2000	3600	8.55
GP-F20-14	0.85 (14)	3650	2000	3600	8.70
GP-F20-16	0.97 (16)	2900	2000	3600	8.85
GP-F20-20	1.22 (20)	2900	2000	3600	9.30
GP-F20-25	1.52 (25)	2900	2000	3600	9.80
GP-F20-30	1.83 (30)	2300	2000	3600	10.25
GP-F20-32	1.95 (32)	2300	2000	3600	10.50

Installation Data

Model	L	L1	Ports	
			In	Out
GP-F20-04	3.70"	1.69"	SAE-12	SAE-10
GP-F20-06	3.87"	1.77"	SAE-12	SAE-10
GP-F20-08	3.95"	1.85"	SAE-12	SAE-10
GP-F20-10	4.12"	1.89"	SAE-12	SAE-10
GP-F20-12	4.25"	1.97"	SAE-12	SAE-10
GP-F20-14	4.35"	2.00"	SAE-12	SAE-10
GP-F20-16	4.50"	2.07"	SAE-12	SAE-10
GP-F20-20	4.72"	2.20"	SAE-12	SAE-10
GP-F20-25	5.05"	2.36"	SAE-12	SAE-10
GP-F20-30	5.35"	2.52"	SAE-16	SAE-12
GP-F20-32	5.79"	2.87"	SAE-16	SAE-12

Flow Rate (gpm) = Displacement (in³/rev) X Speed (rpm) / 231
Volumetric efficiency % ≥93



Ordering Example: Category **GP** - Series **F20** - Displacement **25** - Drive Shaft **P** - Rotation **C** - Options

Category	Series	Displacement (see chart)	Drive Shaft**	Rotation	Options
Gear Pump	F20 Series SAE "A" Mount	04/06/08/10/12 14/16/20/25/30/32	P = 5/8" dia. Straight P1 = 3/4" dia. Straight S9 = SAE 9-tooth spline S11* = SAE 11-tooth spline	C = Clockwise A = Counter-Clockwise (viewed from shaft end)	BB* = Rear Ports

* Special Order

** Additional seal and shaft options available. Consult factory.

Seal kits are available for F20 gear pumps. See page 130 for details.