



FLUID COMPONENTS, INC.

# Hydraulic Motor Model BMK6

Crossover to Char-Lynn® 6000 Series



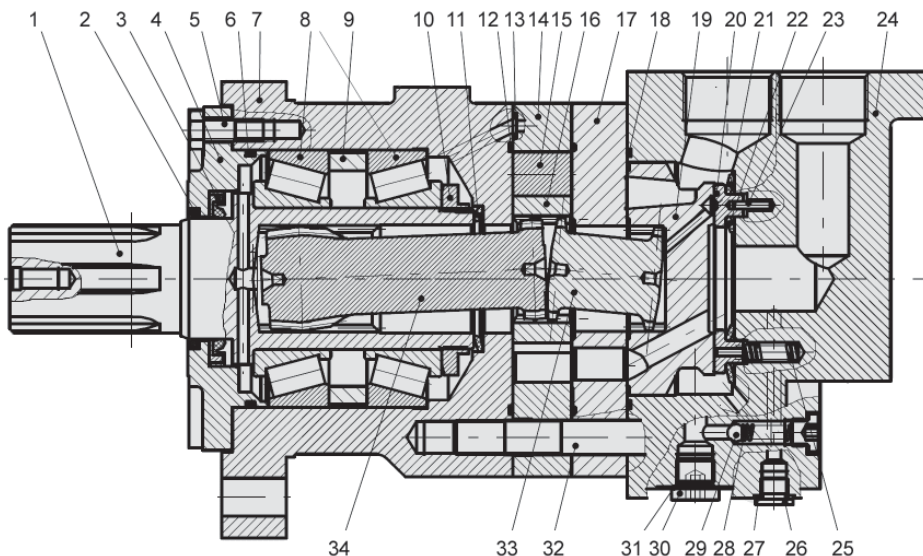
The BMK6 series motor adapts the advanced **ROLORTORC™** gear set design with **DISC** distribution flow and high pressure. These motors can be supplied with various options for multifunctional operations in accordance with the application requirements. The output shaft tapered roller bearings permit high axial and radial forces offering a smooth operation during low pressure start up and high pressure operation.

These low weight advanced construction design motors are manufactured in accordance with the requirements of the ISO 9000-2000 quality system.

## Technical Specifications

MODEL		BMK6 200	BMK6 250	BMK6 315	BMK6 400	BMK6 500	BMK6 630	BMK6 800	BMK6 1000
<b>Displacement</b> <i>in<sup>3</sup>/rev (cm<sup>3</sup>/rev)</i>		11.93 (195.6)	15.01 (246.1)	19.01 (311.6)	23.87 (391.3)	29.95 (490.8)	38.01 (623)	48.96 (802.4)	59.90 (981.6)
<b>Max Speed</b> <i>rpm</i>	Cont	765	610	480	382	304	240	186	152
	Int.	865	830	690	570	455	360	280	230
<b>Max Torque</b> <i>in•lbf</i>	Cont	5000	6284	8142	10266	12789	13099	13984	14824
	Int.	7434	9558	11727	14382	16639	16726	16639	16462
<b>Max Differential</b> <i>psi</i>	Cont	2900	2900	2900	2900	2900	2538	2031	2031
	Int.	4351	4351	4351	4351	3988	3263	2538	2031
<b>Max Flow</b> <i>gpm</i>	Cont	39.62	39.62	39.62	39.62	39.62	39.62	39.62	39.62
	Int.	44.90	54.15	59.43	59.43	59.43	59.43	59.43	59.43
<b>Weight</b>		56 lbs	57 lbs	59 lbs	60 lbs	63 lbs	66 lbs	70 lbs	74 lbs

Continuous (Cont.) = maximum of continuous operation. Intermittent (Int.) = maximum operating range for 6 seconds per minute



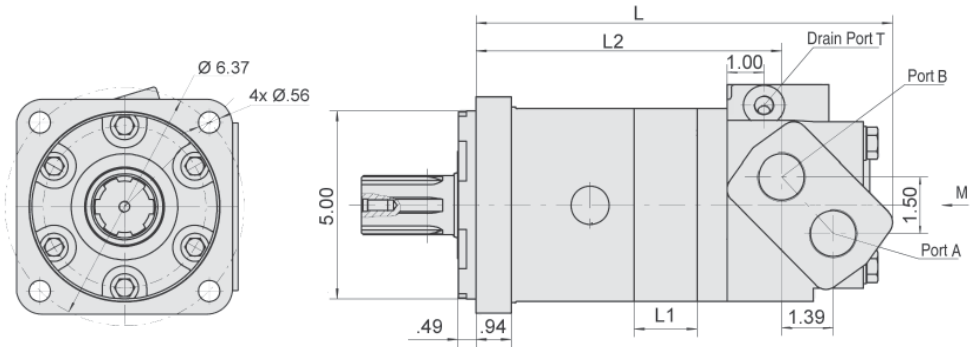
### Diagram Key

- |                     |                      |
|---------------------|----------------------|
| 1 Output Shaft      | 18 "O" Ring          |
| 2 Dust Seal         | 19 Distributor Plate |
| 3 Shaft Seal        | 20 "O" Ring          |
| 4 Front Cover       | 21 Channel Plate     |
| 5 Bolt              | 22 Seal              |
| 6 "O" Ring          | 23 Seal              |
| 7 Housing           | 24 Pin               |
| 8 Needle Bearing    | 25 Spring            |
| 9 Spacer Bushing    | 26 Drain Plug        |
| 10 Lock Nut         | 27 "O" Ring          |
| 11 Butterfly Washer | 28 Spring            |
| 12 "O" Ring         | 29 Ball              |
| 13 Pin              | 30 Drain Plug        |
| 14 Stator           | 31 Seal              |
| 15 Roller           | 32 Bolt              |
| 16 Rotor            | 33 Coupling          |
| 17 Balance Plate    | 34 Drive Link        |

# BMK6 Installation Data

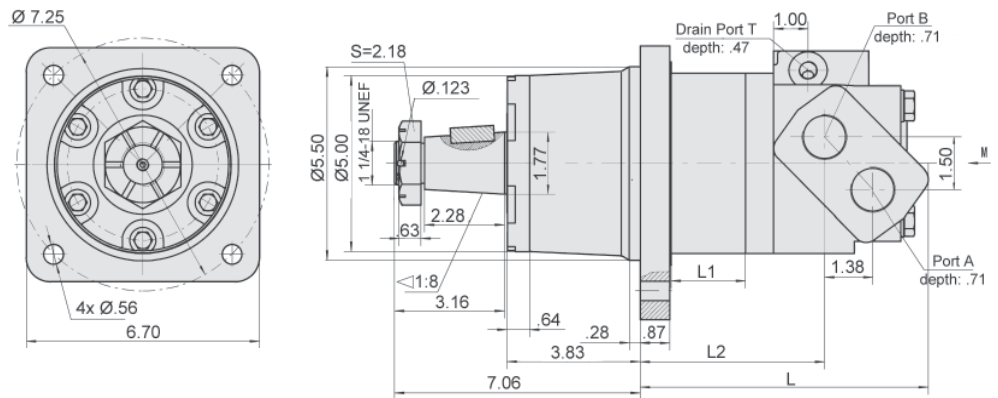
## CC - SAE "CC" Mount

Motor Size	L	L1	L2
200	10.43"	.85"	7.38"
250	10.67"	1.07"	7.60"
315	10.94"	1.36"	7.87"
400	11.30"	1.71"	8.23"
500	11.73"	2.14"	8.70"
630	12.32"	2.72"	9.25"
800	13.11"	3.50"	10.03"
1000	13.89"	4.29"	10.81"



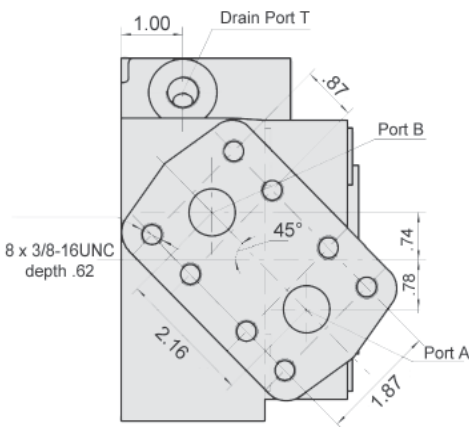
## W - Wheel Mount

Motor Size	L	L1	L2
200	7.04"	0.85"	4.03"
250	7.28"	1.07"	4.25"
315	7.56"	1.36"	4.55"
400	7.91"	1.71"	4.90"
500	8.34"	2.14"	5.33"
630	8.92"	2.72"	5.91"
800	9.70"	3.50"	6.69"
1000	10.49"	4.29"	7.48"

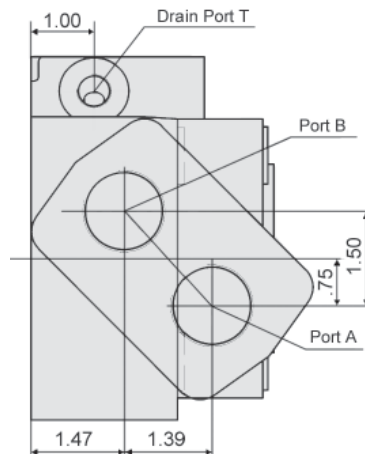


## BMK6 Port Data

### SF



### SF5 & SF7

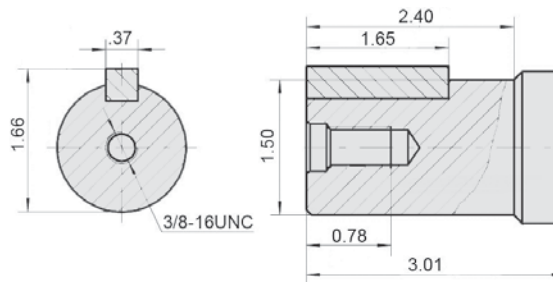


### Port Sizes

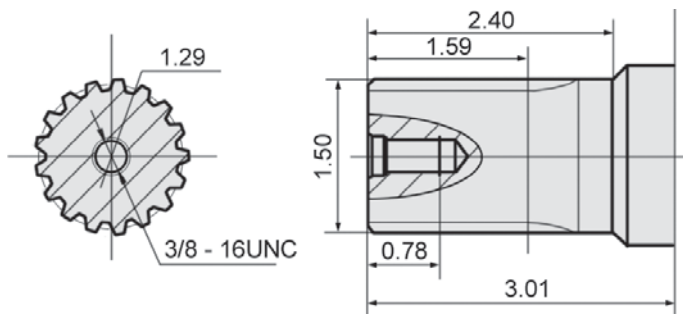
Model	P (A, B)	T
SF	3/4" Split	7/16-20 SAE
SF5	1 5/16-12 SAE	7/16-20 SAE
SF7	G1 (BSP)	G 1/4

# BMK6 Drive Shaft Data

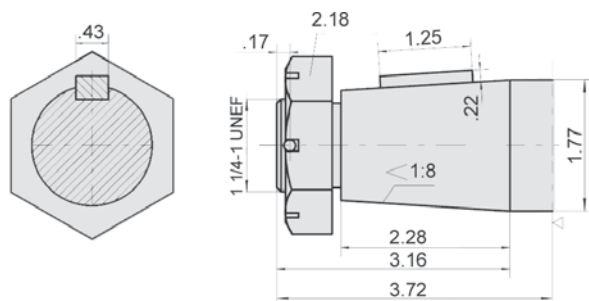
**G2 - 1 1/2" Parallel Key**



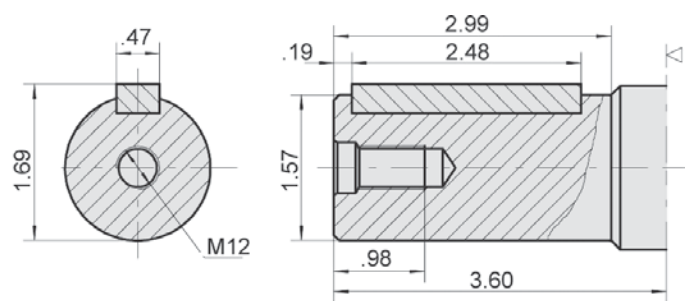
**FE - 17-Tooth DP 12/24 Spline**



**T1 - 1 3/4" Tapered**



**Y1 - 40 mm Parallel Key**



**Ordering Example:** Model **BMK6** - Frame Size **250** - Flange **CC** - Drive Shaft **G2** - Ports **SF5** - Rotation

Model	Frame Size	Mounting Flange	Drive Shaft**	Port Size	Rotation
BMK6	200 (11.93)	CC = SAE "CC"	G2 = 1 1/2" Parallel Key	SF5 = 1 5/16-12 SAE	Omit = Clockwise
	250 (15.01)	W* = Wheel	FE = 17-Tooth Spline	SF* = 3/4" Split Flange	R = Counter-Clockwise
	315 (19.01)		T1* = 1 3/4" Tapered	SF7* = G1 (BSP)	<i>Note: Direction of rotation is indicated when "A" port is pressurized</i>
	400 (23.87)		Y1* = 40mm Parallel Key	Staggered	
	500 (29.95)				
	630 (38.01)				
	800 (48.96)				
	1000 (59.90)				

\*Special Order

\*\*Additional shaft options available. Please consult factory.

Seal kits for BMK6 motors are available for purchase. Order seal kit using item description: "BMK6 Seal Kit".

BMK6 200		11.93 in <sup>3</sup> /rev (195.6 cm <sup>3</sup> /rev)						Max Cont.	Max Int.	Peak	
Pressure (psi →)	254	508	1015	1523	2031	2538	2901	3481	3989	4351	
FLOW	(gpm ↓)	Torque (in•lbf) Speed Specification									
	0.52	265 9 rpm	646 7 rpm	1416 5 rpm							
	2.11	318 39 rpm	672 38 rpm	1486 35 rpm	2318 34 rpm	3053 31 rpm	3876 27 rpm	4115 16 rpm			
	3.96	318 75 rpm	716 75 rpm	1540 74 rpm	2389 71 rpm	3230 65 rpm	4027 60 rpm	4513 45 rpm	5133 32 rpm	5664 16 rpm	
	7.92	327 152 rpm	752 151 rpm	1548 147 rpm	2433 142 rpm	3274 132 rpm	4115 121 rpm	4779 109 rpm	5443 96 rpm	6195 80 rpm	6770 60 rpm
	11.88	327 228 rpm	752 227 rpm	1593 223 rpm	2478 218 rpm	3319 210 rpm	4159 200 rpm	4735 185 rpm	5752 165 rpm	6549 146 rpm	7124 110 rpm
	15.85	336 305 rpm	708 304 rpm	1575 302 rpm	2495 297 rpm	3365 288 rpm	4204 280 rpm	5000 255 rpm	5841 235 rpm	6638 210 rpm	7301 170 rpm
	19.81	283 382 rpm	690 380 rpm	1548 376 rpm	2433 370 rpm	3345 362 rpm	4248 350 rpm	5000 328 rpm	5929 300 rpm	6726 270 rpm	7434 230 rpm
	23.77	230 459 rpm	663 456 rpm	1522 452 rpm	2389 445 rpm	3319 436 rpm	4204 420 rpm	5000 405 rpm	5841 383 rpm	6770 355 rpm	
	27.73	194 536 rpm	619 534 rpm	1504 530 rpm	2389 523 rpm	3274 510 rpm	4159 496 rpm	4956 470 rpm	5841 435 rpm	6726 400 rpm	
	31.70	177 612 rpm	592 610 rpm	1469 605 rpm	2345 598 rpm	3230 585 rpm	4115 570 rpm	4956 536 rpm	5841 502 rpm	6682 485 rpm	
	35.66	123 690 rpm	575 687 rpm	1416 680 rpm	2301 672 rpm	3186 650 rpm	4115 638 rpm	4956 595 rpm	5797 550 rpm	6638 485 rpm	
	39.62 Max Cont.	88 765 rpm	531 765 rpm	1371 755 rpm	2285 740 rpm	3150 725 rpm	3982 700 rpm	4867 640 rpm	5752 580 rpm		
	44.90 Max Int.		531 865 rpm	1371 850 rpm	2256 840 rpm	3097 820 rpm	3982 800 rpm	4825 745 rpm	5664 700 rpm		

BMK6 250		15.01 in <sup>3</sup> /rev (246.1 cm <sup>3</sup> /rev)						Max Cont.	Max Int.	Peak	
Pressure (psi →)	254	508	1015	1523	2031	2538	2901	3481	3989	4351	
FLOW	(gpm ↓)	Torque (in•lbf) Speed Specification									
	0.52	407 7 rpm	814 4 rpm								
	2.11	451 31 rpm	911 30 rpm	1902 27 rpm	2964 24 rpm	3894 21 rpm	4867 15 rpm	4956 10 rpm			
	3.96	460 58 rpm	929 57 rpm	1947 55 rpm	3009 52 rpm	4027 46 rpm	5044 40 rpm	5664 37 rpm	6593 28 rpm	7523 10 rpm	8496 5 rpm
	7.92	486 118 rpm	973 116 rpm	2053 113 rpm	3115 110 rpm	4159 105 rpm	5310 96 rpm	6062 80 rpm	6992 64 rpm	7965 48 rpm	9027 35 rpm
	11.88	513 180 rpm	973 177 rpm	2079 174 rpm	3142 170 rpm	4204 164 rpm	5398 155 rpm	6239 140 rpm	7434 126 rpm	8319 106 rpm	9293 88 rpm
	15.85	469 242 rpm	973 240 rpm	2035 237 rpm	3097 233 rpm	4248 224 rpm	5443 212 rpm	6239 198 rpm	7478 180 rpm	8452 162 rpm	9558 140 rpm
	19.81	398 302 rpm	929 298 rpm	2035 292 rpm	3142 285 rpm	4292 278 rpm	5487 268 rpm	6284 254 rpm	7525 230 rpm	8496 206 rpm	9558 182 rpm
	23.77	398 364 rpm	929 360 rpm	1991 352 rpm	3097 342 rpm	4248 338 rpm	5443 322 rpm	6284 305 rpm	7478 288 rpm	8452 265 rpm	
	27.73	354 424 rpm	885 420 rpm	1947 414 rpm	3009 408 rpm	4204 394 rpm	5398 372 rpm	6239 352 rpm	7434 334 rpm	8408 315 rpm	
	31.70	336 485 rpm	840 479 rpm	1858 471 rpm	3009 463 rpm	4159 454 rpm	5221 442 rpm	6195 420 rpm	7346 385 rpm	8319 365 rpm	
	35.66	309 546 rpm	752 540 rpm	1814 532 rpm	2876 525 rpm	4071 516 rpm	5133 504 rpm	6107 478 rpm	7257 445 rpm		
	39.62 Max Cont.	265 608 rpm	708 605 rpm	1770 600 rpm	2832 592 rpm	3982 580 rpm	5044 566 rpm	6018 532 rpm	7213 496 rpm		
	44.90		575 686 rpm	1681 678 rpm	2787 665 rpm	3894 652 rpm	4956 635 rpm	5974 600 rpm	6638 565 rpm		
	48.87		1631 750 rpm	2743 746 rpm	3805 730 rpm	4823 708 rpm	5929 658 rpm				
	54.15 Max Int.		1548 830 rpm	2655 820 rpm	3699 800 rpm	4743 776 rpm	4974 735 rpm				

BMK6 315											
19.02 in <sup>3</sup> /rev (311.6 cm <sup>3</sup> /rev)											
Max Cont. Max Int. Peak											
Pressure (psi →)	254	508	1015	1523	2031	2538	2901	3481	3989	4351	
FLOW	(gpm ↓)	Torque (in·lbf) Speed Specification									
	0.52	575 5 rpm	1115 4 rpm								
	2.11	601 24 rpm	1144 23 rpm	2478 22 rpm	3628 20 rpm	4774 16 rpm	5752 13 rpm	6638 9 rpm	7788 3 rpm		
	3.96	619 46 rpm	1194 45 rpm	2522 44 rpm	3850 41 rpm	5000 36 rpm	6107 30 rpm	7169 22 rpm	8319 16 rpm	8939 9 rpm	9160 3 rpm
	7.92	619 93 rpm	1194 92 rpm	2610 90 rpm	3894 86 rpm	5310 80 rpm	6549 71 rpm	7788 62 rpm	8762 52 rpm	9735 43 rpm	10443 31 rpm
	11.88	619 142 rpm	1239 140 rpm	2655 138 rpm	4071 132 rpm	5398 127 rpm	6638 120 rpm	7965 118 rpm	9160 96 rpm	11031 85 rpm	11505 72 rpm
	15.85	619 190 rpm	1239 189 rpm	2653 186 rpm	4071 182 rpm	5443 176 rpm	6859 167 rpm	8142 154 rpm	9337 138 rpm	10620 124 rpm	11727 105 rpm
	19.81	575 238 rpm	1194 237 rpm	2610 235 rpm	4027 231 rpm	5443 225 rpm	6903 214 rpm	8742 200 rpm	9426 180 rpm	10735 160 rpm	
	23.77	531 285 rpm	1150 284 rpm	2566 280 rpm	3982 276 rpm	5443 270 rpm	6903 260 rpm	8142 245 rpm	9470 226 rpm	10797 210 rpm	
	27.73	442 335 rpm	1106 333 rpm	2478 330 rpm	3938 324 rpm	5354 316 rpm	6815 302 rpm	8098 290 rpm	9470 271 rpm	10665 248 rpm	
	31.70	398 384 rpm	1062 382 rpm	2478 380 rpm	3894 372 rpm	5310 364 rpm	6770 350 rpm	8054 338 rpm	9331 312 rpm		
	35.66	354 432 rpm	1017 428 rpm	2433 420 rpm	3850 412 rpm	5177 408 rpm	6726 391 rpm	7965 380 rpm	9293 350 rpm		
	39.62 Max Cont.	309 480 rpm	973 475 rpm	2384 462 rpm	3717 458 rpm	5044 450 rpm	6682 435 rpm	7788 420 rpm	9116 395 rpm		
	50.19		885 595 rpm	2168 580 rpm	3319 574 rpm	4602 560 rpm	6062 548 rpm	7257 530 rpm			
	59.43 Max Int.			1947 690 rpm	3097 683 rpm	4225 674 rpm	5669 652 rpm	6815 634 rpm			

BMK6 400											
23.87 in <sup>3</sup> /rev (391.3 cm <sup>3</sup> /rev)											
Max Cont. Max Int. Peak											
Pressure (psi →)	254	508	1015	1523	2031	2538	2901	3481	3989	4351	
FLOW	(gpm ↓)	Torque (in·lbf) Speed Specification									
	1.05	796 4 rpm	1522 2 rpm	3186 1 rpm							
	2.11	840 19 rpm	1593 18 rpm	3274 17 rpm	4912 16 rpm	6461 14 rpm	7832 12 rpm	9072 9 rpm	10576 4 rpm		
	3.96	840 37 rpm	1637 37 rpm	3319 36 rpm	4950 35 rpm	6549 33 rpm	8231 28 rpm	9470 22 rpm	11196 14 rpm	12214 5 rpm	14382 1 rpm
	7.92	867 75 rpm	1637 74 rpm	3363 73 rpm	5089 71 rpm	6726 68 rpm	8496 65 rpm	10045 55 rpm	11683 45 rpm	12877 31 rpm	14382 20 rpm
	11.88	840 114 rpm	1637 113 rpm	3407 111 rpm	5133 108 rpm	6770 105 rpm	8585 100 rpm	10134 90 rpm	11815 80 rpm	13541 72 rpm	
	15.85	796 152 rpm	1593 152 rpm	3363 150 rpm	5133 147 rpm	6815 142 rpm	8629 134 rpm	10222 126 rpm	11904 112 rpm		
	19.81	752 191 rpm	1593 191 rpm	3363 188 rpm	5133 186 rpm	6859 181 rpm	8673 172 rpm	10266 160 rpm	11992 148 rpm		
	23.77	708 230 rpm	1548 229 rpm	3319 227 rpm	5044 224 rpm	6770 220 rpm	8629 212 rpm	10222 200 rpm			
	27.73	619 268 rpm	1460 267 rpm	3186 265 rpm	4956 260 rpm	6726 254 rpm	8540 246 rpm	10178 232 rpm			
	31.70	575 306 rpm	1416 305 rpm	3142 303 rpm	4867 298 rpm	6593 290 rpm	8408 278 rpm	10089 262 rpm			
	35.66	486 345 rpm	1371 343 rpm	3009 337 rpm	4823 330 rpm	6505 322 rpm	8319 310 rpm	9912 295 rpm			
	39.62 Max Cont.	398 382 rpm	1283 380 rpm	2832 376 rpm	4690 370 rpm	6461 362 rpm	8186 352 rpm				
	50.19		1150 483 rpm	2655 476 rpm	4558 470 rpm	6461 458 rpm	8098 445 rpm				
	59.43 Max Int.			2522 570 rpm	4425 560 rpm	6284 550 rpm	7921 535 rpm				

<b>BMK6 500</b>		<b>29.95 in<sup>3</sup>/rev (490.8 cm<sup>3</sup>/rev)</b>					<i>Max Cont.</i>	<i>Max Int.</i>	<i>Peak</i>
<b>Pressure (psi →)</b>	<b>254</b>	<b>508</b>	<b>1015</b>	<b>1523</b>	<b>2031</b>	<b>2538</b>	<b>2901</b>	<b>3480</b>	<b>3988</b>
<b>FLOW</b>	<b>(gpm ↓)</b>	<b>Torque (in·lbf) Speed Specification</b>							
	<b>1.05</b>	1062	2035	4159	6062				
		7 rpm	6 rpm	5 rpm	3 rpm				
	<b>2.11</b>	1106	2124	4204	6239	8319	10311	12169	
		15 rpm	14 rpm	13 rpm	12 rpm	11 rpm	8 rpm	3 rpm	
	<b>3.96</b>	1106	2079	4248	6372	8496	10532	12391	14382
		30 rpm	29 rpm	29 rpm	28 rpm	27 rpm	25 rpm	21 rpm	17 rpm
	<b>7.92</b>	1106	2079	4292	6505	8629	10753	12789	14913
		60 rpm	59 rpm	58 rpm	57 rpm	54 rpm	50 rpm	45 rpm	35 rpm
	<b>11.88</b>	1106	2079	4292	6505	8629	10753	12835	
		91 rpm	90 rpm	89 rpm	87 rpm	84 rpm	78 rpm	70 rpm	
	<b>15.85</b>	1062	2079	4248	6461	8629	10797	12922	
		121 rpm	121 rpm	120 rpm	118 rpm	114 rpm	108 rpm	98 rpm	
	<b>19.81</b>	973	1991	4159	6416	8585	10797		
		152 rpm	151 rpm	149 rpm	146 rpm	142 rpm	135 rpm		
	<b>23.77</b>	885	1947	4115	6372	8540	10753		
		182 rpm	182 rpm	180 rpm	178 rpm	175 rpm	168 rpm		
	<b>27.73</b>	840	1814	4071	6284	8496	10709		
		213 rpm	212 rpm	210 rpm	206 rpm	201 rpm	195 rpm		
	<b>31.70</b>	796	1725	3982	6195	8408	10665		
	244 rpm	243 rpm	240 rpm	235 rpm	228 rpm	221 rpm			
<b>35.66</b>	752	1548	3850	6018	8275	10355			
	274 rpm	273 rpm	270 rpm	265 rpm	258 rpm	250 rpm			
<b>39.62</b> <i>Max Cont.</i>	619	1371	3717	5885	8142	10178			
	304 rpm	303 rpm	301 rpm	292 rpm	287 rpm	280 rpm			
<b>50.19</b>		1150	3186	5133	7655				
		385 rpm	382 rpm	373 rpm	365 rpm				
<b>59.43</b> <i>Max Int.</i>			2832	4912	7080				
			455 rpm	440 rpm	432 rpm				

<b>BMK6 630</b>		<b>38.01 in<sup>3</sup>/rev (623.0 cm<sup>3</sup>/rev)</b>					<i>Max Cont.</i>	<i>Peak</i>
<b>Pressure (psi →)</b>	<b>254</b>	<b>508</b>	<b>1015</b>	<b>1523</b>	<b>2031</b>	<b>2538</b>	<b>2901</b>	<b>3263</b>
<b>FLOW</b>	<b>(gpm ↓)</b>	<b>Torque (in·lbf) Speed Specification</b>						
	<b>1.05</b>	1150	2168	4425	6638			
		6 rpm	5 rpm	4 rpm	2 rpm			
	<b>2.11</b>	1194	2345	4779	7124	9243		
		12 rpm	12 rpm	11 rpm	10 rpm	8 rpm		
	<b>3.96</b>	1239	2478	5177	7655	9603	12612	
		24 rpm	23 rpm	22 rpm	21 rpm	16 rpm	13 rpm	
	<b>7.92</b>	1283	2610	5354	8186	11240	13099	15754
		48 rpm	47 rpm	45 rpm	42 rpm	38 rpm	34 rpm	30 rpm
	<b>11.88</b>	1283	2610	5398	8142	11771	12966	15665
		72 rpm	71 rpm	70 rpm	68 rpm	65 rpm	58 rpm	50 rpm
	<b>15.85</b>	1194	2522	5354	8098	11771	12966	
		95 rpm	94 rpm	91 rpm	87 rpm	83 rpm	78 rpm	
	<b>19.81</b>	1150	2453	5266	8098	11722		
		120 rpm	119 rpm	116 rpm	112 rpm	106 rpm		
	<b>23.77</b>	1017	2301	5177	8009	11594		
		145 rpm	144 rpm	141 rpm	137 rpm	130 rpm		
	<b>27.73</b>	885	2256	5089	7921	11550		
		168 rpm	167 rpm	164 rpm	160 rpm	152 rpm		
	<b>31.70</b>	752	2079	4956	7788	11328		
	192 rpm	191 rpm	186 rpm	182 rpm	175 rpm			
<b>35.66</b>	663	1947	4779	7567				
	216 rpm	215 rpm	212 rpm	207 rpm				
<b>39.62</b> <i>Max Cont.</i>	442	1770	4646	7434				
	240 rpm	239 rpm	236 rpm	233 rpm				
<b>50.19</b>			4115	7036				
			300 rpm	293 rpm				
<b>59.43</b> <i>Max Int.</i>			3805	6549				
			360 rpm	348 rpm				

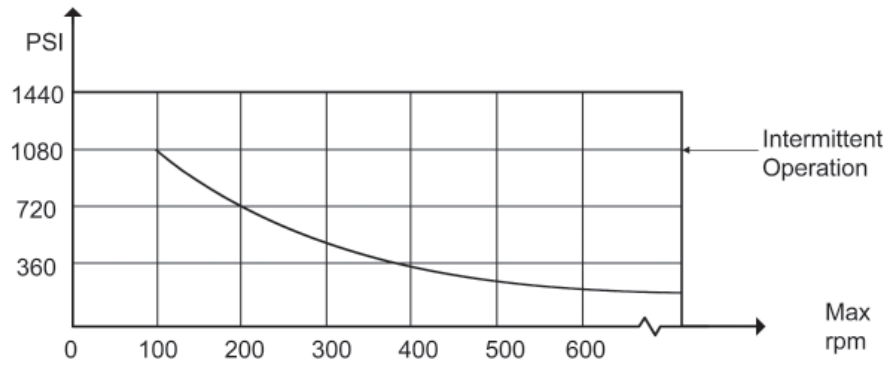
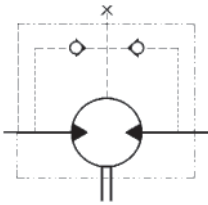


<b>BMK6 800</b>		<b>48.96 in<sup>3</sup>/rev (802.4 cm<sup>3</sup>/rev)</b>						<i>Max Cont.</i>	<i>Max Int.</i>	<i>Peak</i>	
<b>Pressure (psi →)</b>	<b>254</b>	<b>508</b>	<b>725</b>	<b>1015</b>	<b>1233</b>	<b>1523</b>	<b>1740</b>	<b>2031</b>	<b>2248</b>	<b>2538</b>	
<b>FLOW</b>	<b>(gpm ↓)</b>	<b>Torque (in·lbf) Speed Specification</b>									
	<b>1.05</b>	1522	3053	4690	6107	7611					
		4 rpm	4 rpm	2 rpm	2 rpm	1 rpm					
	<b>2.11</b>	1593	3142	4779	6416	8452	9558	11284	12037		
		9 rpm	9 rpm	8 rpm	8 rpm	7 rpm	6 rpm	5 rpm	4 rpm		
	<b>3.96</b>	1637	3274	5000	6708	8673	10001	11196	12568	14647	16639
		18 rpm	18 rpm	17 rpm	17 rpm	16 rpm	15 rpm	14 rpm	12 rpm	10 rpm	9 rpm
	<b>7.92</b>	1681	3407	5221	7036	8894	10620	11771	13904	15400	
		36 rpm	35 rpm	34 rpm	33 rpm	32 rpm	31 rpm	29 rpm	28 rpm	26 rpm	
	<b>11.88</b>	1681	3407	5221	7880	8983	10620	12214	13718		
		55 rpm	55 rpm	54 rpm	53 rpm	52 rpm	52 rpm	50 rpm	48 rpm		
	<b>15.85</b>	1637	3363	5133	6992	8983	10620	11904			
		74 rpm	73 rpm	72 rpm	70 rpm	69 rpm	67 rpm	65 rpm			
	<b>19.81</b>	1557	3274	5089	6921	8850	10488	12081			
		92 rpm	92 rpm	91 rpm	88 rpm	87 rpm	85 rpm	82 rpm			
	<b>23.77</b>	1460	3186	4956	6770	8762	10355				
		112 rpm	111 rpm	110 rpm	108 rpm	106 rpm	102 rpm				
	<b>27.73</b>	1327	3009	4912	6638	8662	10222				
		130 rpm	129 rpm	128 rpm	127 rpm	125 rpm	120 rpm				
	<b>31.70</b>	1168	2816	4823	6505	8363	10001				
	149 rpm	148 rpm	146 rpm	143 rpm	140 rpm	135 rpm					
<b>35.66</b>	929	2672	4646	6254	8063						
	168 rpm	167 rpm	165 rpm	162 rpm	158 rpm						
<b>39.62</b> <i>Max Cont.</i>	788	2389	4425	6018	7788						
	186 rpm	185 rpm	183 rpm	180 rpm	176 rpm						
<b>50.19</b>		2655	4204	5841	7567						
		235 rpm	233 rpm	230 rpm	226 rpm						
<b>59.43</b> <i>Max Int.</i>			3743	5416	7346						
			280 rpm	276 rpm	272 rpm						

<b>BMK6 1000</b>		<b>59.90 in<sup>3</sup>/rev (981.6 cm<sup>3</sup>/rev)</b>						<i>Max Cont.</i>	
<b>Pressure (psi →)</b>	<b>254</b>	<b>508</b>	<b>725</b>	<b>1015</b>	<b>1233</b>	<b>1523</b>	<b>1740</b>	<b>2031</b>	
<b>FLOW</b>	<b>(gpm ↓)</b>	<b>Torque (in·lbf) Speed Specification</b>							
	<b>1.05</b>	1991	4071	5664	7744	9603			
		3 rpm	3 rpm	2 rpm	2 rpm	1 rpm			
	<b>2.11</b>	2035	4159	6151	8363	10355	12523	13807	14824
		7 rpm	7 rpm	6 rpm	6 rpm	5 rpm	4 rpm	3 rpm	2 rpm
	<b>3.96</b>	2124	4292	6328	8540	10620	12789	13984	15754
		15 rpm	15 rpm	15 rpm	14 rpm	14 rpm	13 rpm	13 rpm	12 rpm
	<b>7.92</b>	2124	4381	6372	8806	10930	13099	14515	16462
		30 rpm	30 rpm	30 rpm	29 rpm	28 rpm	27 rpm	25 rpm	23 rpm
	<b>11.88</b>	2124	4381	6372	8850	11063	13187	15046	
		45 rpm	45 rpm	44 rpm	44 rpm	43 rpm	42 rpm	40 rpm	
	<b>15.85</b>	2079	4336	6328	8762	11019	13276		
		60 rpm	60 rpm	60 rpm	59 rpm	57 rpm	55 rpm		
	<b>19.81</b>	1991	4204	6284	8673	10886	13143		
		76 rpm	76 rpm	76 rpm	75 rpm	73 rpm	70 rpm		
	<b>23.77</b>	1902	4071	6234	8496	10753	12966		
		91 rpm	91 rpm	91 rpm	90 rpm	88 rpm	85 rpm		
	<b>27.73</b>	1770	3938	6107	8319	10576	12745		
		106 rpm	106 rpm	105 rpm	105 rpm	103 rpm	100 rpm		
	<b>31.70</b>	1637	3717	5885	8142	10222			
	122 rpm	122 rpm	121 rpm	119 rpm	116 rpm				
<b>35.66</b>	1327	3451	5620	7877	9912				
	137 rpm	137 rpm	136 rpm	136 rpm	134 rpm				
<b>39.62</b> <i>Max Cont.</i>	973	3186	5354	7611	9558				
	152 rpm	151 rpm	150 rpm	148 rpm	145 rpm				
<b>50.19</b>		2832	5089	7257	9249				
		192 rpm	190 rpm	188 rpm	185 rpm				
<b>59.43</b> <i>Max Int.</i>			4558	7080	9027				
			230 rpm	228 rpm	224 rpm				

## BMK6 Technical Data

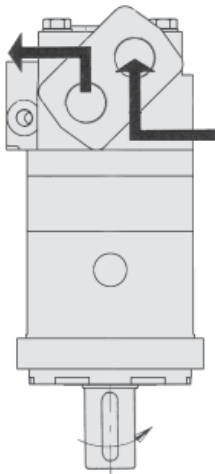
### Shaft Seal Rated Pressure



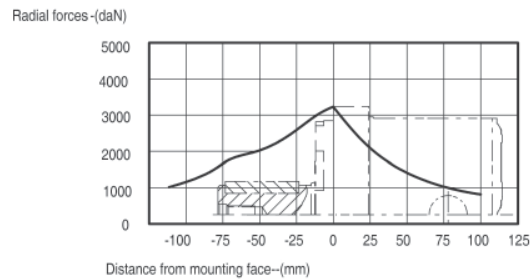
### Case Drain

In applications without a motor drain line, the pressure exerted on the shaft seal is marginally in excess of the return line pressure. When the drain line is used the pressure exerted on the shaft seal is equal to the return line pressure.

### Shaft Rotation Direction



BMK6 for CC Mounting Radial forces



The bearing curve represents allowable bearing loads for an B10 bearing life (2000 hours or 12x10<sup>6</sup> revolutions at 100rpm) at rated output torque. Other speed load multiply a load values.

The maximum load curve is defined by bearing static load capacity.

This curve should not be exceeded at any time including shock loads.