



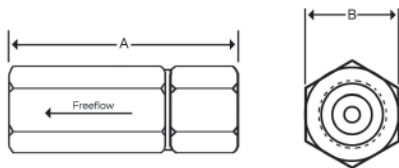
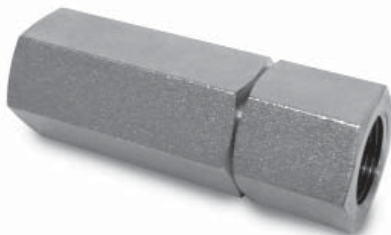
FLUID COMPONENTS, INC.

HSP & VU Series Check Valves

Model HSP - Hard Seat

Features

- Carbon Steel Construction
- 5 lb or 65 lb Cracking Pressure
- Metal to Metal Seal



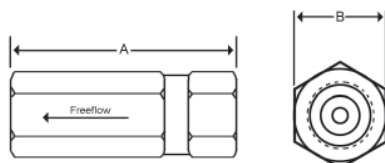
Model #'s & Dimensional Information

Model #	Thread Size	A	B	Rated Flow (gpm)	Rated Pressure (psi)	Weight (lbs)
HSP-1000-2-5 or 65	1/4" NPT	2.44"	.87"	6	5000	.35
HSP-1000-3-5 or 65	3/8" NPT	2.87"	1.00"	10	5000	.44
HSP-1000-4-5 or 65	1/2" NPT	3.76"	1.26"	18	5000	.77
HSP-1000-6-5 or 65	3/4" NPT	4.30"	1.50"	30	5000	1.54
HSP-1000-8-5 or 65	1" NPT	5.12"	1.69"	36	5000	2.43
HSP-1000-10-5 or 65	1 1/4" NPT	5.56"	2.40"	50	3000	6.95
HSP-1000-12-5 or 65	1 1/2" NPT	5.56"	2.56"	60	3000	7.28
HSP-1001-4-5 or 65	7/16"-20 SAE	2.56"	.87"	6	5000	.35
HSP-1001-6-5 or 65	9/16"-20 SAE	2.91"	.94"	10	5000	.44
HSP-1001-8-5 or 65	3/4"-16 SAE	3.74"	1.18"	18	5000	.77
HSP-1001-10-5 or 65	7/8"-14 SAE	3.75"	1.26"	24	4500	1.00
HSP-1001-12-5 or 65	1 1/16"-12 SAE	4.29"	1.42"	30	3000	1.54
HSP-1001-16-5 or 65	1 5/16"-12 SAE	5.00"	1.81"	36	3000	2.43
HSP-1001-20-5 or 65	1 5/8"-12 SAE	5.20"	2.41"	50	3000	6.95
HSP-1001-24-5 or 65	1 7/8"-12 SAE	5.20"	2.56"	60	3000	7.28

Model VU - Soft Seat

Features

- Carbon Steel Construction
- 7 lb or 70 lb Cracking Pressure
- Buna-N Seal



Model #'s & Dimensional Information

Model #	Thread Size	A	B	Rated Flow (gpm)	Rated Pressure (psi)	Weight (lbs)
VU14F-7 or 70	1/4" NPT	2.83"	.87"	10.6	10,000	.35
VU38F-7 or 70	3/8" NPT	3.30"	1.03"	13.2	10,000	.44
VU12F-7 or 70	1/2" NPT	3.78"	1.18"	18.5	7,250	.77
VU34F-7 or 70	3/4" NPT	4.28"	1.50"	26.4	7,250	1.54
VU1F-7 or 70	1" NPT	4.96"	1.81"	39.6	7,250	2.43