

General Information

Pressure Gauges

The maximum working pressures of standard gauges should not exceed 75% of full scale for constant pressure applications, or 66% of full scale for pulsating pressures. Normal overpressures allowed are: 1.25 times FSV for ranges up to 1,000 psi; 1.15 times FSV for ranges between 1,000 and 10,000 psi; 1.10 times FSV for higher pressures. Dial face includes both psi (black) and bar (red) scales. PSI only faces may be available. To see standard increments and dial faces, see pages 123-124.

Glycerine is used as standard in most Dynamic fluid-filled gauges. Neither glycerine nor silicone should be used in applications involving oxygen, chlorine, nitric acid, hydrogen peroxide or other oxidizing agents.

All Dynamic gauges come with a standard polycarbonate lens. Safety glass or tempered glass covers are available with minimum order. Dynamic filled gauges include a dual relief valve/blowout disc for operating safety.

Test Points

The need for preventative maintenance of hydraulic systems in general has added to the use of test points throughout the system. This need is answered by the installation of a range of test points, plugs and probes, which can be connected under full system pressure to 6000 psi. Where the introduction of test points is needed, and the hydraulic system uses flexible hydraulic hoses, Dynamic has a range of hose couplings fitted with test points. For full product data consult pages 16-18.

Gauges, Valves & Accessories

TABLE OF CONTENTS

Gauges

Service Filter Gauges	5
CDS Series - Dry	6-7
CF Series - Glycerine-filled	8-9
PDLC Series - 4" Glycerine-filled	10
CFC Series - 4" Glycerine-filled	11
PDSS Series - All Stainless Steel	12-13
Pressure Gauge Accessories	14-15

Test Point Plugs, Probes & Hose Assemblies

Test Point Plugs & Probes	16
Hose Couplings	17
Hose Assemblies & End Fittings	18

Valves & Flow Dividers

Check Valves	19
Ball Valves & Accessories	20-23
Needle Valves	24-25
Flow Control Valves	26-27
Selector Valve	28-29
Log Splitter Control Valve	30
Flow Dividers	31-32

Reservoir Accessories

Breathers	33-34
-----------------	-------

Hose Grips & Quick Disconnects

Hose Grips	35
Quick Disconnects	36-47

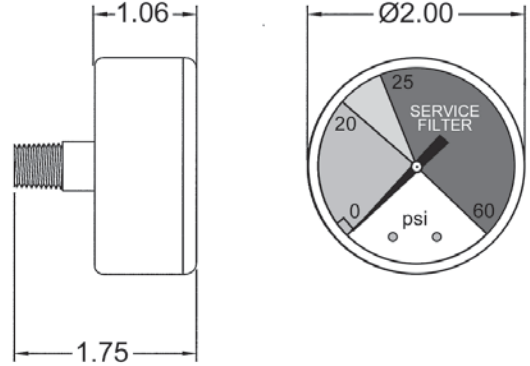
Model DCI-20

Features

- Steel Case
- Phosphor Bronze Bourdon Tube
- Standard Range: 0-60 psi
- 1/8" NPT Bronze Connection
- Polycarbonate Lens
- Dry Gauge
- **Liquid-filled Available w/ SS Case*



Installation Data



Ordering Example:

Model	Options
DCI-20	-

Model	Options
DCI-20 = 2" Service Filter Gauge	omit = Dry LF* = Liquid-filled <i>*special order</i>

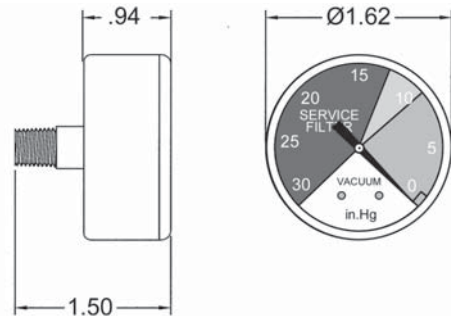
Model DGV-10

Features

- Steel Case
- Phosphor Bronze Bourdon Tube
- Vacuum Range: 30"HG - 0 psi
- 1/8" NPT Bronze Connection
- Polycarbonate Lens
- Dry Gauge
- Center Back & Stem Mounts Available



Installation Data



Ordering Example:

Model	Style
DGV-10	A

Model	Style
DGV-10 = 1.5" Vacuum Service Filter Gauge	A = Stem D = Center Back

Additional pressure ranges and color breaks available with minimum order.



FLUID COMPONENTS, INC.

CDS Series Dry Gauges

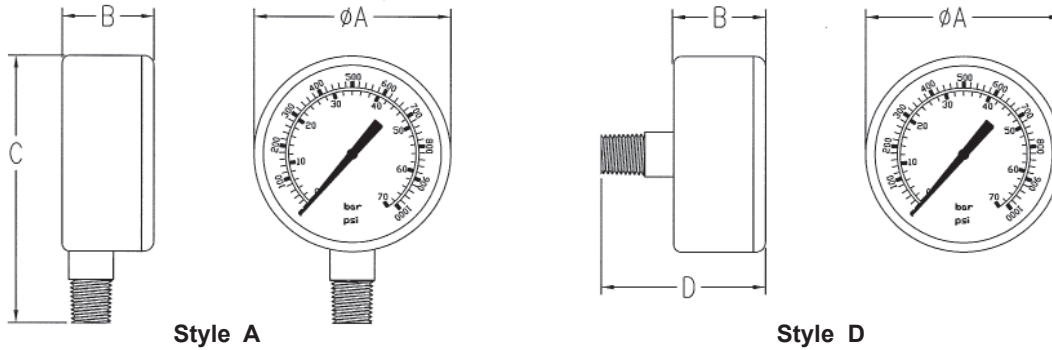
1 1/2" , 2" and 2 1/2" • Stem & Center Back Mounts

Features

- Steel Case
- Phosphor Bronze Bourdon Tube
- Bronze Connection
- Polycarbonate Lens
- Built-in Snubber
- Range: Vacuum to 6,000 psi
- Dual Scale: psi & bar
- Accuracy: ± 1.6% FSD
- Temperature Range: -40° to 180° F
- Certificate of Accuracy Available (see page 15 for details)



Installation Data



Size	A	B	C	D	Port	Weight	
						Style A	Style D
1 1/2"	1.62"	.90"	2.26"	1.50"	1/8" NPT	.10 lbs	.15 lbs
2"	2.00"	1.08"	2.81"	1.80"	1/4" NPT*	.20 lbs	.20 lbs
2 1/2"	2.45"	1.05"	3.22"	1.75"	1/4" NPT*	.25 lbs	.25 lbs

* 1/8" NPT available w/ min. order. Add -8N to end of model #.

Ordering Example: **CDS** - **1** **P** - **210** **D**

Model	Size	Type	Pressure Range	Style
CDS = Dry Gauge	*4 = 1 1/2" dia. 5 = 2" dia. 1 = 2 1/2" dia.	C = Compound V = Vacuum P = Pressure	002 = 30" Hg - 30 psi** 000 = 30" Hg - 0 psi 001 = 15 psi 002 = 30 psi 004 = 60 psi 007 = 100 psi 010 = 160 psi 015 = 200 psi 020 = 300 psi 040 = 600 psi 070 = 1000 psi 100 = 1500 psi 140 = 2000 psi 210 = 3000 psi 280 = 4000 psi 350 = 5000 psi 420 = 6000 psi	A = Stem D = Center Back

Some size/range combinations may only be available by special order.

* 1 1/2" dia. is limited to 5000 psi

**Additional compound ranges may be available by special order.

Logo and custom gauge faces available with minimum 100 piece order. Call for details.

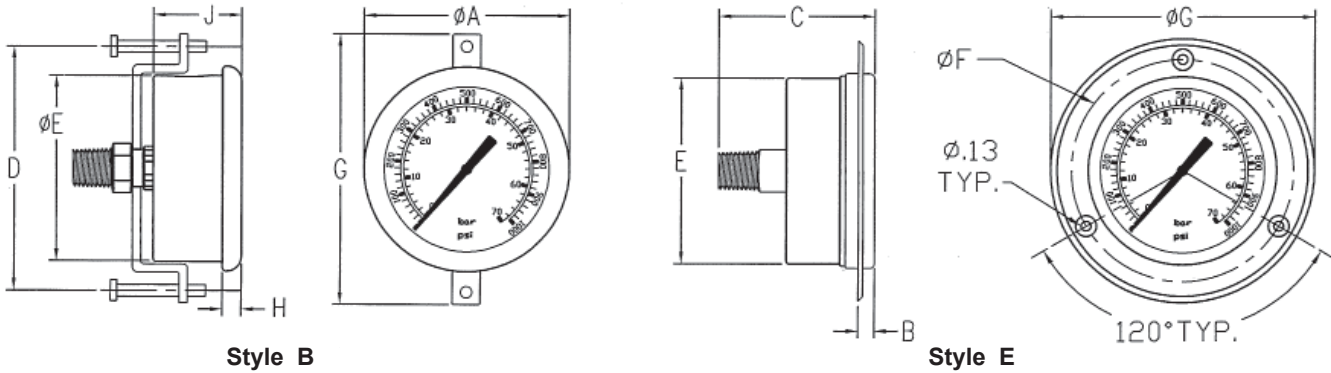
CDS Series Dry Gauges 2" and 2 1/2" • Panel Clamp & Flange Mounts

Features

- Steel Case, Rolled Bezel
- Phosphor Bronze Bourdon Tube
- Bronze Connection
- Polycarbonate Lens
- Built-in Snubber
- Range: Vacuum to 6,000 psi
- Dual Scale: psi & bar
- Accuracy: $\pm 1.6\%$ FSD
- Temperature Range: -40° to 180° F
- Certificate of Accuracy Available (see page 15 for details)



Installation Data



Size	A	B	C	D	E	F	G	H	J	Port	Weight	
											Style B	Style E
2"	2.25"	.20"	1.75"	2.28"	2.05"	2.45"	2.80"	.21"	1.15"	1/4" NPT*	.30	.25
2 1/2"	2.68"	.20"	1.75"	3.14"	2.40"	2.85"	3.29"	.25"	1.17"	1/4" NPT*	.40	.30

* 1/8" NPT available w/ min. order. Add -8N to end of model #.

Ordering Example: Model **CDS** - Size **5** Type **P** - Range **210** Style **E**

Model	Size	Type	Pressure Range	Style
CDS = Dry Gauge	5 = 2" dia. 1 = 2 1/2" dia.	C = Compound V = Vacuum P = Pressure	002 = 30" Hg - 30 psi** 000 = 30" Hg - 0 psi 001 = 15 psi 002 = 30 psi 004 = 60 psi 007 = 100 psi 010 = 160 psi 015 = 200 psi 020 = 300 psi 040 = 600 psi	070 = 1000 psi 100 = 1500 psi 140 = 2000 psi 210 = 3000 psi 280 = 4000 psi 350 = 5000 psi 420 = 6000 psi
				B = Panel Clamp E = Panel Flange

Some size/range combinations may only be available by special order.

**Additional compound ranges may be available by special order.

Logo and custom gauge faces available with minimum 100 piece order. Call for details.



FLUID COMPONENTS, INC.

CF Series Gauges

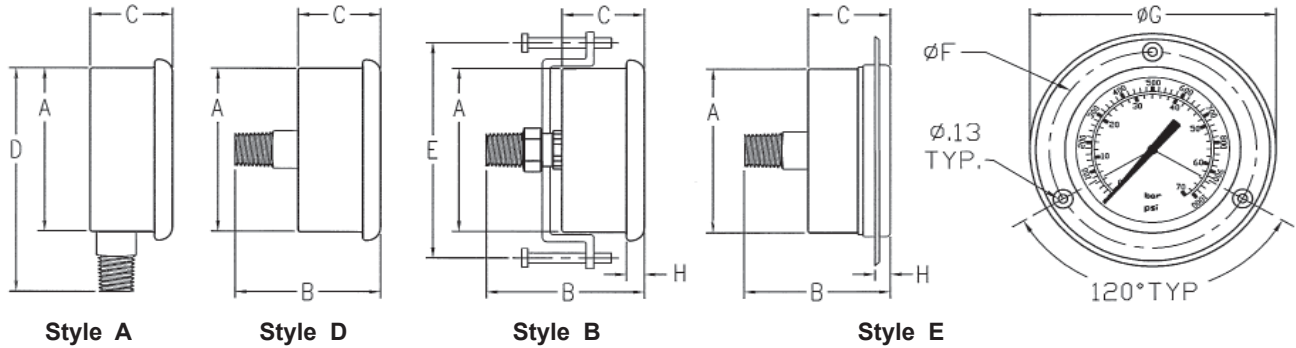
1 1/2", 2" and 2 1/2" • Glycerine-Filled

Features

- 304 Stainless Steel Case & Bezel
- Phosphor Bronze Bourdon Tube
- Bronze Connection
- Polycarbonate Lens
- Built-in Snubber
- Range: Vacuum to 10,000 psi
- Dual Scale: psi & bar
- Accuracy: ± 1.6% FSD
- Temperature Range: -13° to 180°F
- Certificate of Accuracy Available (see page 15 for details)



Installation Data



Size	A	B	C	D	E	F	G	H	Port	Weight (in lbs)			
										Style A	Style B	Style D	Style E
1 1/2"	1.58"	1.98"	1.02"	2.47"	2.30"	2.08"	2.45"	.20"	1/8" NPT	.20	.30	.25	.25
2"	1.98"	2.21"	1.19"	3.05"	2.28"	2.40"	2.76"	.24"	1/4" NPT*	.35	.45	.40	.40
2 1/2"	2.40"	2.25"	1.18"	3.45"	3.18"	2.90"	3.42"	.25"	1/4" NPT*	.45	.55	.50	.55

*1/8" NPT available w/ min. order. Add -8N to end of model #.

Ordering Example: CF 1 P - 350 A

Model	Size	Type	Pressure Range	Style
CF =	*4 = 1 1/2" dia.	C = Compound	002 = 30" Hg - 30 psi**	A = Stem
Glycerine-filled	5 = 2" dia.	V = Vacuum	000 = 30" Hg - 0 psi	B = Panel Clamp
Gauge	1 = 2 1/2" dia.	P = Pressure	001 = 15 psi	D = Center Back
			002 = 30 psi	E = Panel Flange
			004 = 60 psi	
			007 = 100 psi	
			010 = 160 psi	
			015 = 200 psi	
			020 = 300 psi	
			040 = 600 psi	
			070 = 1000 psi	
			100 = 1500 psi	
			140 = 2000 psi	
			210 = 3000 psi	
			280 = 4000 psi	
			350 = 5000 psi	
			420 = 6000 psi	
			700 = 10,000 psi	
			800 = 15,000 psi	

Some size/range combinations may only be available by special order.

*Note: 1 1/2" dia. is limited to 6000 psi
 **Additional compound ranges may be available by special order.

Logo and custom gauge faces available with minimum 50 piece order. Call for details.

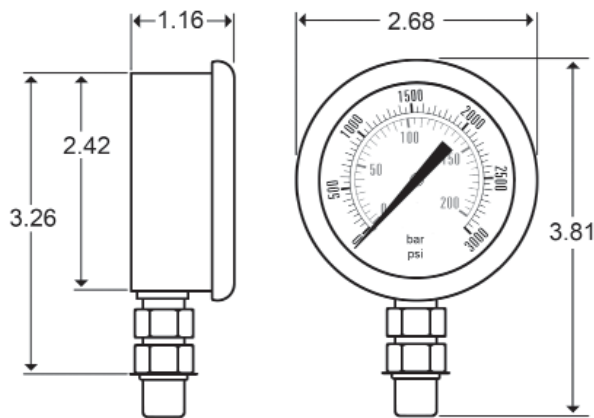
CF Series (SAE) Gauges 2 1/2" • Glycerine-Filled • SAE Swivel Mount

Features

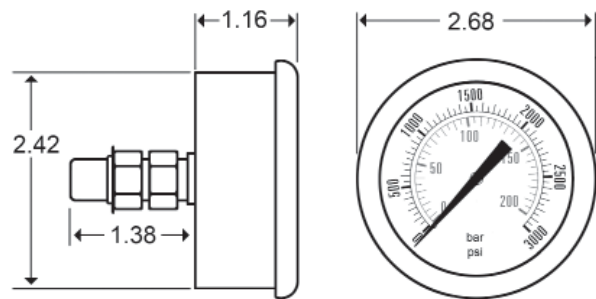
- 304 Stainless Steel Case & Bezel
- Phosphor Bronze Bourdon Tube
- SAE 7/16-20 Bronze Connection
- Polycarbonate Lens
- Built-in Snubber
- Range: Vacuum to 10,000 psi
- Dual Scale: psi & bar
- Accuracy: ± 1.6% FSD
- Temperature Range: -13° to 180°F
- Certificate of Accuracy Available
(see page 15 for details)



Installation Data



Style A



Style D

Ordering Example:

Model	Size	Type	Range	Style	Connection
CF	1	P	- 210	A	- SAE

Model	Size	Type	Pressure Range	Style	Connection	
CF = Glycerine-filled Gauge	1 = 2 1/2"	C = Compound V = Vacuum P = Pressure	002 = 30" Hg - 30 psi** 000 = 30" Hg - 0 psi 001 = 15 psi 002 = 30 psi 004 = 60 psi 007 = 100 psi 010 = 160 psi 015 = 200 psi 020 = 300 psi 040 = 600 psi	070 = 1000 psi 100 = 1500 psi 140 = 2000 psi 210 = 3000 psi 280 = 4000 psi 350 = 5000 psi 420 = 6000 psi 700 = 10,000 psi	A = Stem D = Center Back*	7/16-20UNF (SAE-04)

*Special order - minimum quantities may apply.

*Additional compound ranges may be available by special order.

Logo and custom gauge faces available with minimum 50 piece order. Call for details.



FLUID COMPONENTS, INC.

PDLC Series Gauges

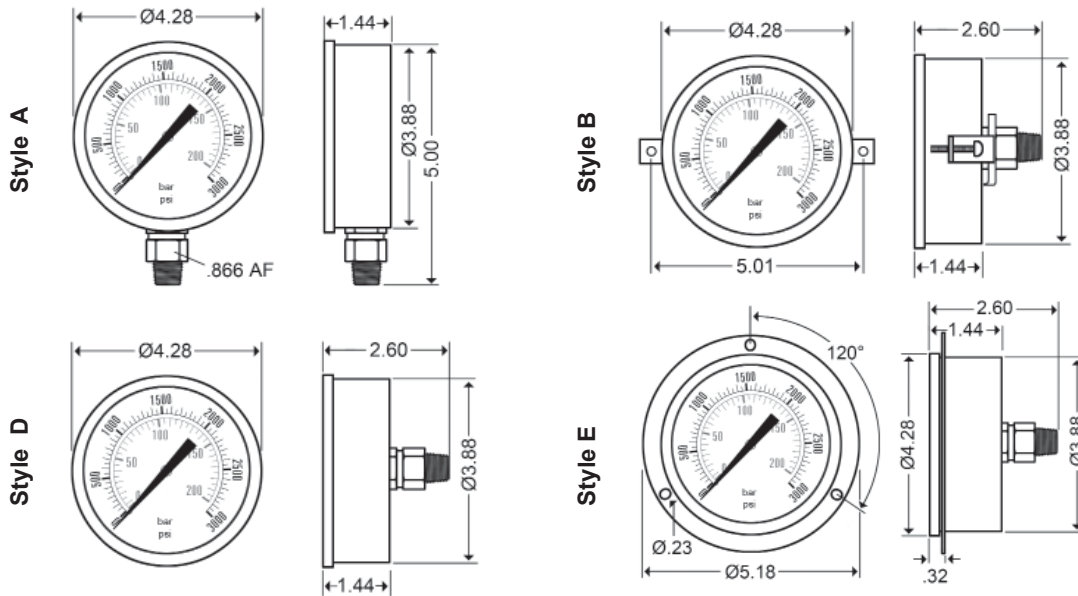
4" • Low-Cost Glycerine-Filled Gauges

Features

- 304 Stainless Steel Case & Bezel
- Phosphor Bronze Bourdon Tube
- Bronze 1/4" NPT Connection
- Polycarbonate Lens
- Built-in Snubber
- Range: 15 psi to 10,000 psi
- Dual Scale: psi & bar
- Accuracy: ± 2% FSD
- Temperature Range: -40° to 180°F
- Certificate of Accuracy Available
(see page 15 for details)



Installation Data



1/4" NPT is standard connection for all PDLC gauges.

Weight (in lbs)			
Style A	Style B	Style D	Style E
1.20	1.45	1.25	1.30

Ordering Example:

Model	Size	Type	Range	Style
PDLC	2	P	070	A

Model	Size	Type	Pressure Range	Style	
PDLC = Low cost, glycerine-filled 4" gauge	2 = 4" dia.	P = Pressure	001 = 15 psi 002 = 30 psi 004 = 60 psi 007 = 100 psi 010 = 160 psi 015 = 200 psi 020 = 300 psi 040 = 600 psi	070 = 1000 psi 100 = 1500 psi 140 = 2000 psi 210 = 3000 psi 280 = 4000 psi 350 = 5000 psi 420 = 6000 psi 700 = 10,000 psi	A = Stem B = Panel Clamp D = Center Back E = Panel Flange

*Some pressure range / mount configurations may require special order.

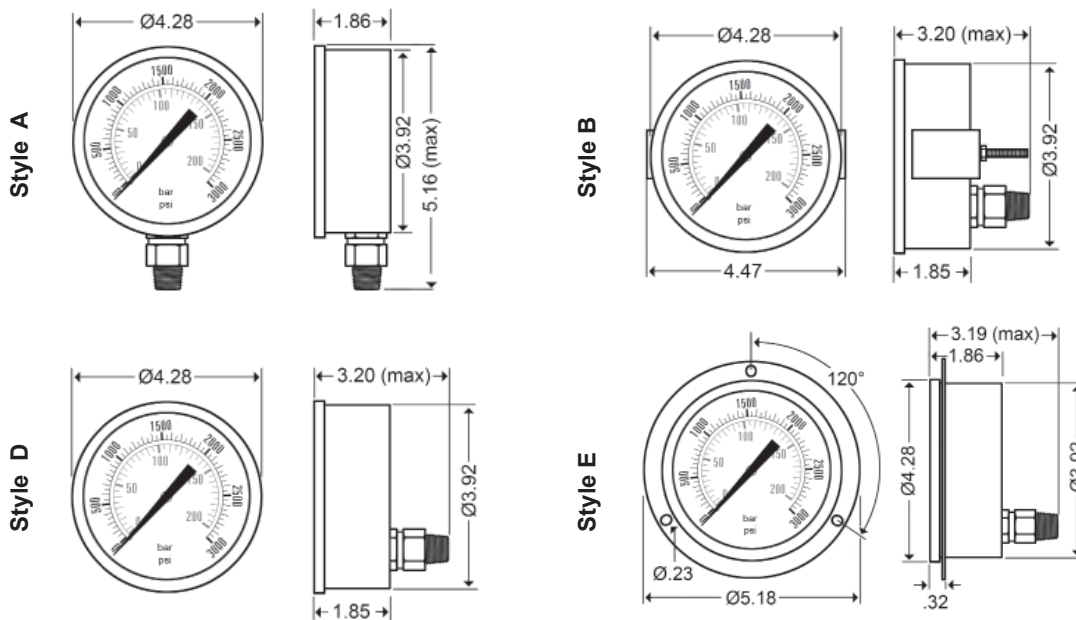
CFC Series Gauges 4" • Glycerine-Filled Gauges

Features

- 304 Stainless Steel Case & Bezel
- Phosphor Bronze Bourdon Tube
- Bronze connection
- Polycarbonate Lens
- Built-in Snubber
- Range: Vacuum to 10,000 psi
- Dual Scale: psi & bar
- Accuracy: $\pm 1.6\%$ FSD
- Temperature Range: -40° to 180°F
- Certificate of Accuracy Available
(see page 15 for details)



Installation Data



1/4" NPT is standard connection for 600 psi and below;
1/2" NPT is standard for 1000 psi and above

Weight (in lbs)			
Style A	Style B	Style D	Style E
1.55	1.75	1.65	1.70

Ordering Example:

Model	Size	Type	Range	Style
CFC	2	P	- 350	A

Model	Size	Type	Pressure Range	Style
CFC = Glycerine-filled 4" Gauge	2 = 4" dia.	C = Compound V = Vacuum P = Pressure	002 = 30" Hg - 30 psi** 000 = 30" Hg - 0 psi 001 = 15 psi 002 = 30 psi 004 = 60 psi 007 = 100 psi 010 = 160 psi 015 = 200 psi 020 = 300 psi 040 = 600 psi 070 = 1000 psi 100 = 1500 psi 140 = 2000 psi 210 = 3000 psi 280 = 4000 psi 350 = 5000 psi 420 = 6000 psi 700 = 10,000 psi	A = Stem B = Panel Clamp D = Lower Back E = Panel Flange

**Additional compound ranges may be available by special order.



FLUID COMPONENTS, INC.

PDSS Series Gauges

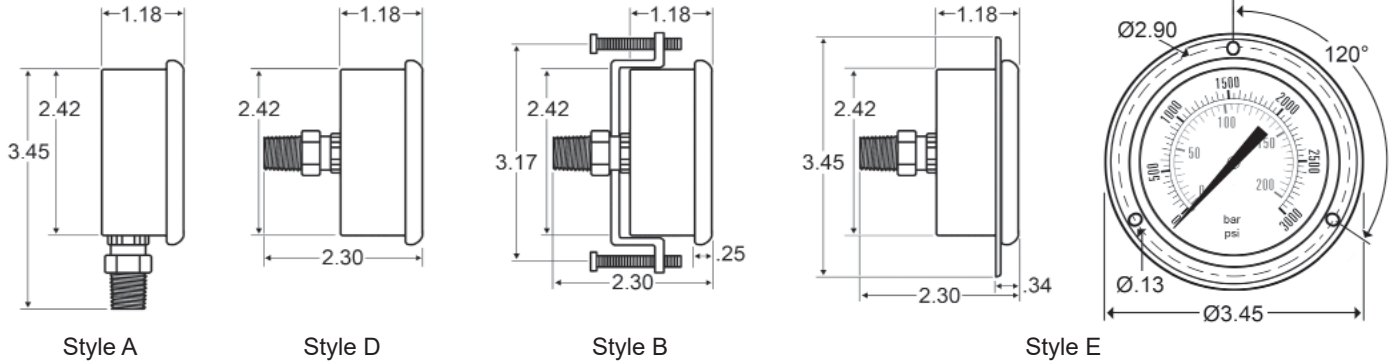
2 1/2" • All Stainless Steel Gauges

Features

- 304 Stainless Steel Case
- 316 Stainless Steel Connection
- 316 Stainless Steel Bourdon Tube
- Built-in Snubber
- Polycarbonate Lens
- Liquid-Filled & Dry Options
- Ambient Temp: -13° F to 150°F
- Max. Process Temp: 750°F
- Range: Vacuum to 15,000 psi
- Dual Scale: psi & bar
- Accuracy: ± 1.6% FSD
- Certificate of Accuracy Available (see page 15 for details)



Installation Data



Weight (in lbs)			
Style A	Style B	Style D	Style E
.45	.55	.50	.55

1/4" NPT is the standard connection for all 2 1/2" PDSS gauges.

Ordering Example: Model **PDSS** - Size **1** Type **P** - Range **040** Style **A** - Options **001**

Model	Size	Type	Pressure Range	Style	Options
PDSS = All Stainless Steel Gauges	1 = 2 1/2" dia.	C = Compound V = Vacuum P = Pressure	002 = 30" Hg -30 psi** 000 = 30" Hg - 0 psi 001 = 15 psi 002 = 30 psi 004 = 60 psi 007 = 100 psi 010 = 160 psi 015 = 200 psi 020 = 300 psi 040 = 600 psi 070 = 1000 psi	A = Stem B = Panel Clamp D = Center Back E = Panel Flange	001 = Glycerine-filled 002 = Dry*

* Special Order

**Additional compound ranges may be available by special order.

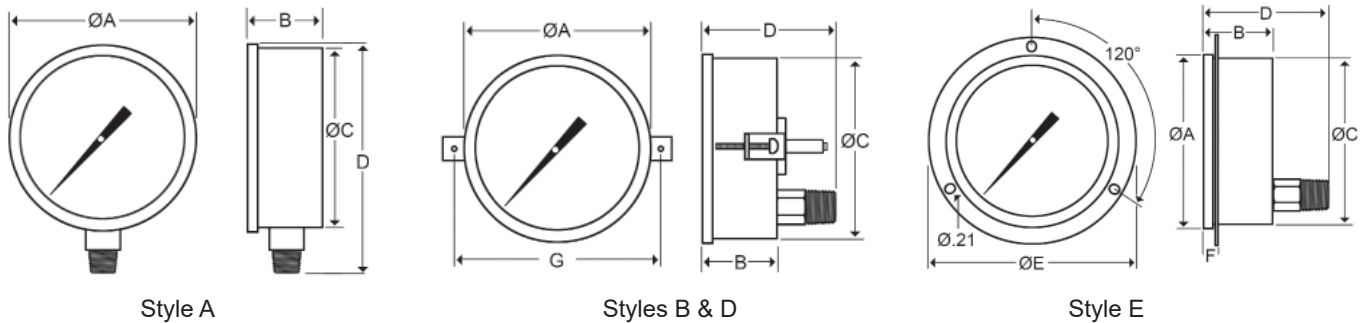
PDSS Series Gauges 4" • All Stainless Steel Gauges

Features

- 304 Stainless Steel Case
- 316 Stainless Steel Connection
- 316 Stainless Steel Bourdon Tube
- Built-in Snubber
- Polycarbonate Lens
- Liquid-Filled & Dry Options
- Range: Vacuum to 15,000 psi
- Single Scale: psi
- Ambient Temp: -13° F to 150°F
- Max. Process Temp: 750°F
- Accuracy: ± 1% FSD
- Certificate of Accuracy Available
(see page 15 for details)



Installation Data



Style	A	B	C	D*	E	F	G	Weight
A - Stem	4.28"	1.84"	3.87"	5.30" (1/4" NPT) 5.36" (1/2" NPT)	-	-	-	1.55
B - Panel Clamp	4.28"	1.87"	3.87"	3.10" (1/4" NPT) 3.20" (1/2" NPT)	-	-	5.00"	1.75
D - Lower Back	4.28"	1.87"	3.87"	3.10" (1/4" NPT) 3.20" (1/2" NPT)	-	-	-	1.65
E - Panel Flange	4.28"	1.87"	3.87"	3.10" (1/4" NPT) 3.20" (1/2" NPT)	5.13"	.27"	-	1.70

*1/4" NPT is standard connection for 600 psi and below; 1/2" NPT is standard for 1000 psi and above

Ordering Example: Model **PDSS** - Size **2** Type **P** - Range **070** Style **D** - Options **001**

Model	Size	Type	Pressure Range	Style	Options
PDSS = All Stainless Steel Gauges	2 = 4" dia.	C = Compound V = Vacuum P = Pressure	002 = 30" Hg -30 psi** 000 = 30" Hg - 0 psi 001 = 15 psi 100 = 1500 psi 002 = 30 psi 140 = 2000 psi 004 = 60 psi 210 = 3000 psi 007 = 100 psi 280 = 4000 psi 010 = 160 psi 350 = 5000 psi 015 = 200 psi 420 = 6000 psi 020 = 300 psi 700 = 10,000 psi 040 = 600 psi 800 = 15,000 psi 070 = 1000 psi	A = Stem B = Panel Clamp D = Lower Back E = Panel Flange	001 = Glycerine-filled 002* = Dry

* Special Order

**Additional compound ranges may be available by special order.



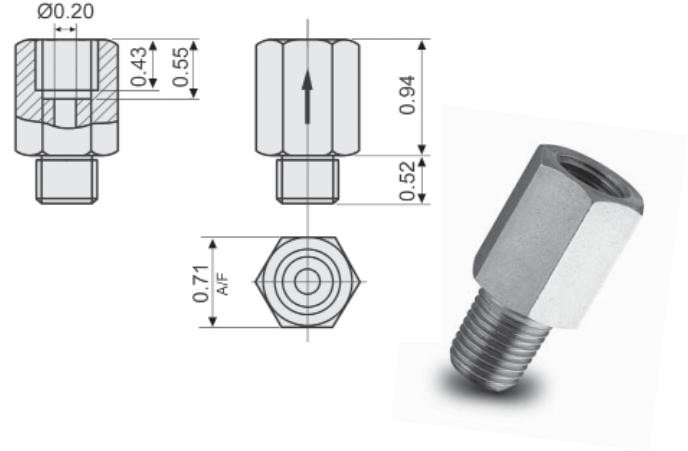
FLUID COMPONENTS, INC.

Pressure Gauge Accessories

Gauge Snubbers

By fitting with a snubber, a pressure gauge is protected from harmful pressure surges and pulsations which would otherwise overload the gauge mechanism.

The snubber has a helically formed oilway with a small orifice through which fluid must pass to reach the gauge. This provides high resistance to smooth out surges and pulses, yet allows rapid responses and steady gauge readings.



Available Models

PDD-4B	1/4" NPT
PDD-4-04SAE	7/16-20UNF (SAE-04)

Adjustable Gauge Snubber / Shut-Off Valve

Our adjustable snubbers allow you to throttle and/or shut-off flow to protect hydraulic gauges from pressure spikes in your system and reduce pointer vibrations.

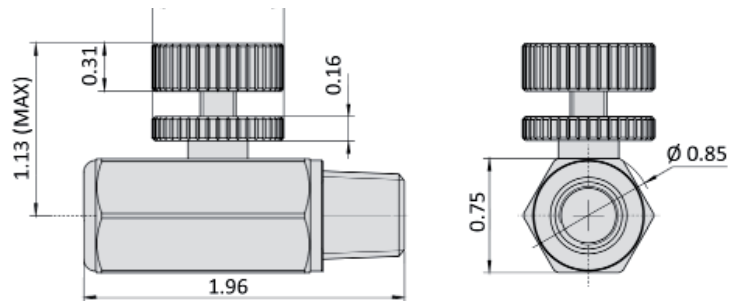


Features

- Zero leakage at shutoff
- Locknut prevents accidental adjustments
- Optional SAE threads allow knob to be positioned in any direction

Materials

- Zinc plated steel body with 316SS stem
- Buna-N Seals standard (Viton optional)



Ordering Example: Model **NSAB** - Seals **BN** - Female Connection **N** - Male Connection **N**

Model	Seals	Female Connection	Male Connection
NSAB	BN - Buna-N V - Viton*	N - 1/4"NPT Female S - SAE-04 Female	N - 1/4"NPT Male S - SAE-04 Male

*Available by special order



FLUID COMPONENTS, INC.

Gauge Protectors

Dynamic recommends the use of our rubber housing gauge protector on our standard 2 1/2" stem mount & center back mount, liquid-filled gauges (styles "A" or "D"). This saves damage to the gauge should it be dropped or bumped.

Weight: 0.10 lbs

Order by Model #: GP-40N



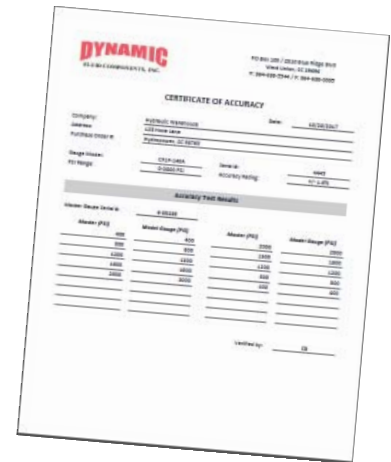
Certificate of Accuracy

Dynamic offers in-house generated certificates of accuracy for all gauges up to 10,000 psi. Gauges are tested against a calibrated Test Gauge with .6% accuracy and the pressure of both gauges is documented at predetermined increments from 0 psi to maximum pressure then back to 0 psi. Customers are provided with a certificate documenting all pressure readings, as well as the serial number which matches the gauge tested.

Certificates of Accuracy produced at Dynamic Fluid Components do not conform with ANSI or NIST standards. Should this additional level certification be required, the customer would need to obtain it independently from a third-party source.

To order, add "Certificate of Accuracy" as a separate line item.

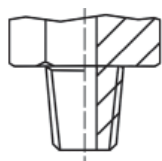
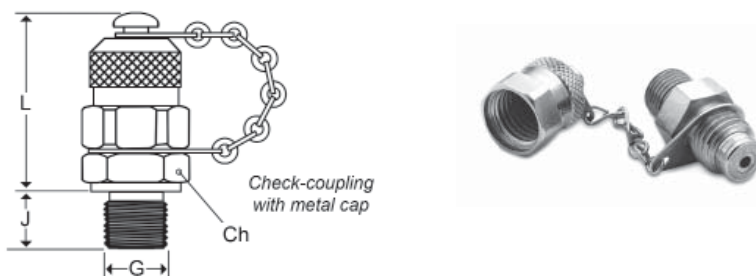
There is a set fee per gauge for these certificates.



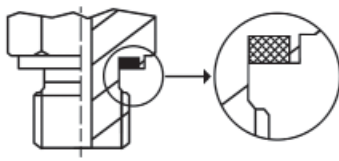
D1620 Series - M16 x 2.0 Test Point Plugs

Features

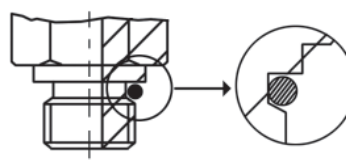
- Connects Under Full Pressure
- Rated at 9000 psi
- All Steel Construction
- Buna Seals are Standard



Form C



Form E



Form F

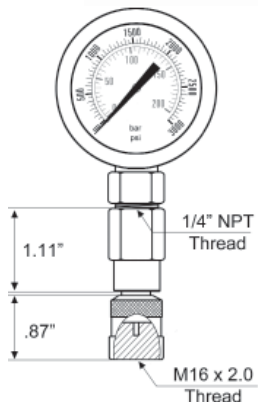
Model #	Form	Max. Pressure	Ch.	J	G	Weight
D1620-01-18NPT	C	5800 psi	.67"	.37"	1/8" NPT	.15 lbs
D1620-01-14NPT	C	9000 psi	.67"	.55"	1/4" NPT	.15 lbs
D1620-01-04SAE	F	9000 psi	.67"	.43"	04-SAE	.15 lbs
D1620-01-06SAE	F	9000 psi	.75"	.47"	06-SAE	.15 lbs
D1620-01-08SAE	F	9000 psi	.87"	.55"	08-SAE	.15 lbs
D1620-01-M10X1	E	9000 psi	.67"	.33"	M10X1	.15 lbs
D1620-01-M12x1.5	E	9000 psi	.67"	.47"	M12x1.5	.15 lbs
D1620-01-M14x1.5	E	9000 psi	.75"	.47"	M14x1.5	.15 lbs
D1620-01-M16x1.5	E	9000 psi	.87"	.47"	M16x1.5	.15 lbs
D1620-01-18BSPP	E	9000 psi	.67"	.32"	1/8" BSPP	.15 lbs
D1620-01-14BSPP	E	9000 psi	.75"	.47"	1/4" BSPP	.15 lbs
D1620-01-38BSPP	E	9000 psi	.87"	.47"	3/8" BSPP	.15 lbs

DGA1620 Series - M16 x 2.0

Test Point Probe



DGA1620 Test Point Probes are designed to connect directly to the D1620 Test Point Plugs (above). When fitted with the desired pressure gauge, the system pressure is released into the gauge's bourdon tube as the probe opens the test point valve. It can be connected and disconnected under pressure. This provides a precise means to monitor system pressure without turning the system off. Weight: 0.15 lbs



Model #: DGA1620 Test Point Probe*

Gauge Protectors

Dynamic recommends the use of a gauge protector Buna N rubber housing when using a test point probe. This saves damage to the gauge should it be dropped or bumped during the test proceedings. Gauge Protectors can be ordered using model #: GP-40N. See page 15.

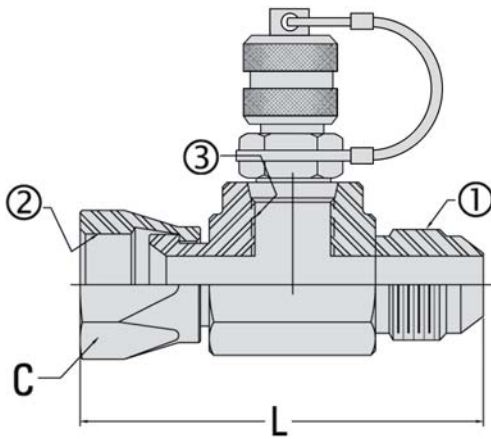
*Test Point Probe does not include gauge.

Features

- 6,000 psi Working Pressure
- Fitted with Test Point Plug
- Can be used with direct or remote test probes
- J.I.C. 37° Hose Connection
- Can be connected and disconnected at full system pressure

Install J.I.C. Hose Couplings between the female swivel nut of the flexible hose and the fixed male connection. The integrated test point may be used with Dynamic test probes and/or test kits to obtain random pressure and temperature checks during servicing or fault finding. Fluid sampling probes are also compatible.

All probes may be connected and disconnected at full pressure without fluid loss or ingress of dirt.



Model #'s and Dimensional Information

Model #	1 Male JIC	2 Female JIC Swivel	3 ORB Port	C Nut Hex	L Length	Operating Pressure	Weight
HSP1040-4	7/16-20	7/16-20	7/16-20	9/16	2.28	6000	.30 lbs
HSP1040-6	9/16-20	9/16-20	7/16-20	11/16	2.40	6000	.35 lbs
HSP1040-8	3/4-16	3/4-16	7/16-20	7/8	2.62	6000	.40 lbs
HSP1040-10	7/8-14	7/8-14	7/16-20	1	2.96	5000	.45 lbs
HSP1040-12	1 1/16-12	1 1/16-12	7/16-20	1 1/4	3.45	5000	.55 lbs
HSP1040-16	1 5/16-12	1 5/16-12	7/16-20	1 1/2	4.05	4000	1.05 lbs

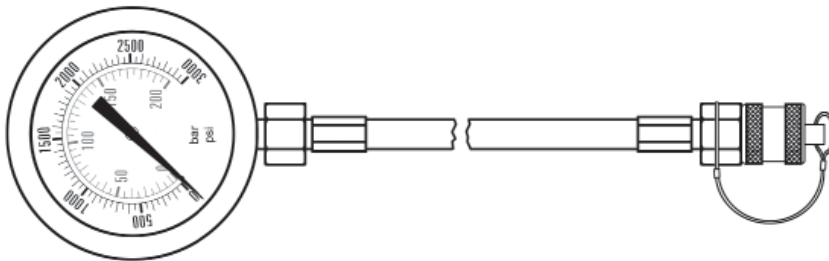


FLUID COMPONENTS, INC.

Hose Assemblies

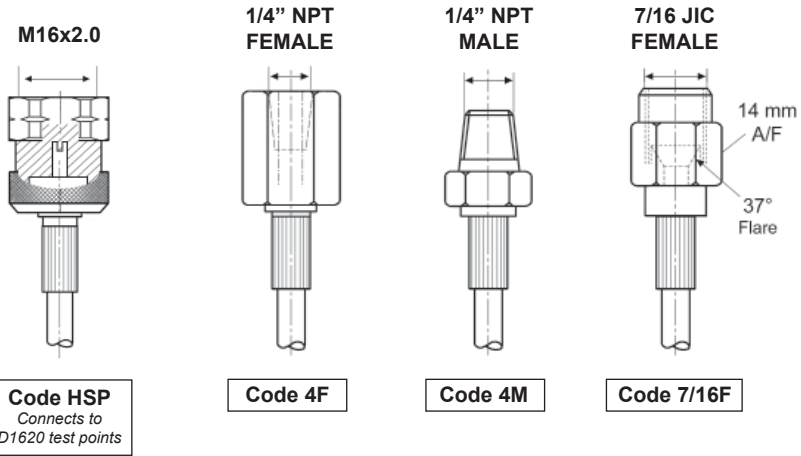
Dynamic hose assemblies are designed for use with Dynamic test plugs, pipe couplings and pressure gauges. Together, they facilitate pressure readings on a random basis throughout a hydraulic system. Probes may be connected or disconnected with the system at full working pressure without loss of oil or ingress of dirt. Use of test points saves the installation of multiple pipework and gauges.

Test Hose OD: 5mm / ID: 2mm
 Maximum Hose Pressure: 9000 psi



Standard Hose Lengths		
12"	24"	36"
48"	60"	72"

Please specify in inches if other lengths are required. Minimum length is 12".



Code HSP
Connects to D1620 test points

Code 4F

Code 4M

Code 7/16F

Ordering Example: DHA - HSP - 12 - 4F

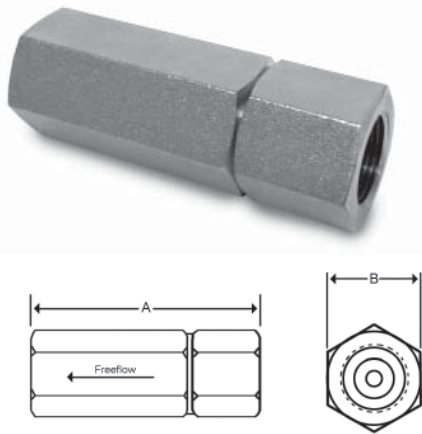
Model	End Fitting*	Hose Length	End Fitting*
DHA = Dynamic Hose Assembly	HSP	Length in inches	HSP
	4F		4F
	4M		4M
	7/16F		7/16F

*Additional hose ends available by special order. 50pc minimum order requirement for special orders.

Model HSP - Hard Seat

Features

- Carbon Steel Construction
- 5 lb or 65 lb Cracking Pressure
- Metal to Metal Seal
- Trivalent Clear Chromate Coating



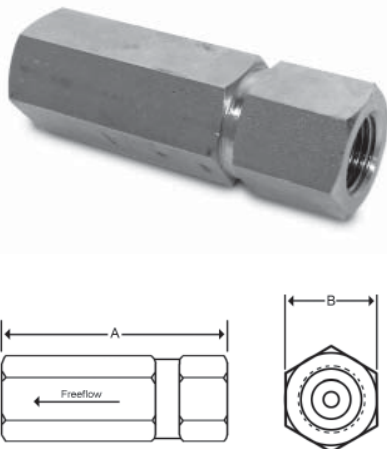
Model #'s & Dimensional Information

Model #	Thread Size	A	B	Rated Flow (gpm)	Rated Pressure (psi)	Weight (lbs)
HSP-1000-2-5 or 65	1/4" NPT	2.44"	.87"	6	5000	.35
HSP-1000-3-5 or 65	3/8" NPT	2.87"	1.00"	10	5000	.44
HSP-1000-4-5 or 65	1/2" NPT	3.76"	1.26"	18	5000	.77
HSP-1000-6-5 or 65	3/4" NPT	4.30"	1.50"	30	5000	1.54
HSP-1000-8-5 or 65	1" NPT	5.12"	1.69"	36	5000	2.43
HSP-1000-10-5 or 65	1 1/4" NPT	5.56"	2.40"	50	3000	6.95
HSP-1000-12-5 or 65	1 1/2" NPT	5.56"	2.56"	60	3000	7.28
HSP-1001-4-5 or 65	7/16"-20 SAE	2.56"	.87"	6	5000	.35
HSP-1001-6-5 or 65	9/16"-20 SAE	2.91"	.94"	10	5000	.44
HSP-1001-8-5 or 65	3/4"-16 SAE	3.74"	1.18"	18	5000	.77
HSP-1001-10-5 or 65	7/8"-14 SAE	3.75"	1.26"	24	4500	1.00
HSP-1001-12-5 or 65	1 1/16"-12 SAE	4.29"	1.42"	30	3000	1.54
HSP-1001-16-5 or 65	1 5/16"-12 SAE	5.00"	1.81"	36	3000	2.43
HSP-1001-20-5 or 65	1 5/8"-12 SAE	5.20"	2.41"	50	3000	6.95
HSP-1001-24-5 or 65	1 7/8"-12 SAE	5.20"	2.56"	60	3000	7.28

Model VU - Soft Seat

Features

- Carbon Steel Construction
- 7 lb or 70 lb Cracking Pressure
- Buna-N Seal



Model #'s & Dimensional Information

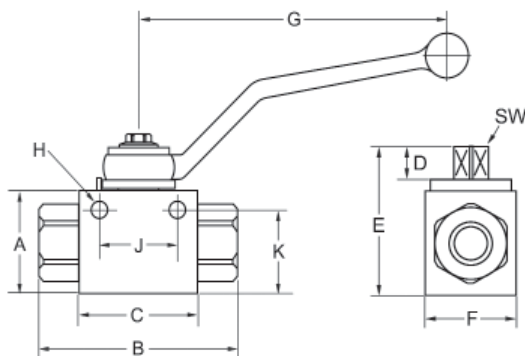
Model #	Thread Size	A	B	Rated Flow (gpm)	Rated Pressure (psi)	Weight (lbs)
VU14F-7 or 70	1/4" NPT	2.83"	.87"	10.6	10,000	.35
VU38F-7 or 70	3/8" NPT	3.30"	1.03"	13.2	10,000	.44
VU12F-7 or 70	1/2" NPT	3.78"	1.18"	18.5	7,250	.77
VU34F-7 or 70	3/4" NPT	4.28"	1.50"	26.4	7,250	1.54
VU1F-7 or 70	1" NPT	4.96"	1.81"	39.6	7,250	2.43

Features

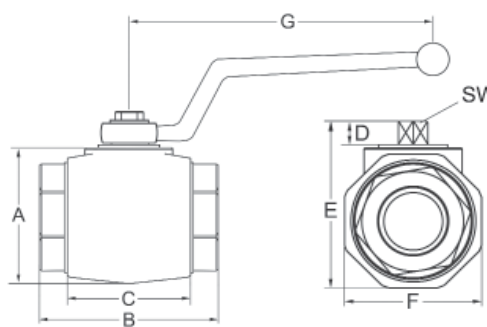
- Mounting Holes on DE models
- 1/4" - 2" Sizes - NPT and SAE
- Full and Reduced Port
- Blow-Out Proof Stems
- Max Pressure: Up to 7250 psi
- Max Temperature: 215°F

Materials

- Carbon Steel Construction
- Standard Seals: Buna-N;
Seat: POM; Stem: Teflon;
other seals by special order
- Chrome-plated Steel Ball



DE Model



DB Model

Model #'s & Dimensional Information

Model #	Thread	psi	Port	A	B	C	D	E	F	G	H	J	K	SW	Weight
DE2-14NPT	1/4" NPT	7250	.24	1.27	2.71	1.45	.37	1.75	1.10	4.51	.18	1.03	1.05	.32	1.0 lb
DE2-38NPT	3/8" NPT	7250	.39	1.58	2.84	1.65	.41	2.08	1.27	4.51	.26	1.24	1.38	.32	1.5 lb
DE2-12NPT	1/2" NPT	7250	.51	1.58	3.27	1.90	.41	2.08	1.39	4.51	.26	1.46	1.38	.32	1.5 lb
DE2-34NPT	3/4" NPT	5800	.79	2.25	3.74	2.36	.55	2.97	1.90	6.38	.26	1.76	1.99	.39	3.5 lb
DE2-1-NPT	1" NPT	5000	.98	2.53	4.45	2.56	.55	3.25	2.25	6.38	.26	2.17	2.29	.39	5.0 lb
DE2-114R-NPT <i>Reduced Port</i>	1 1/4" NPT	5000	.98	2.53	4.73	2.56	.55	3.25	2.37	6.38	.26	2.17	2.29	.39	5.5 lb
DE2-112R-NPT <i>Reduced Port</i>	1 1/2" NPT	5000	.98	2.53	4.85	2.56	.55	3.25	2.37	6.38	.26	2.17	2.29	.39	6.0 lb
DB2-114-NPT	1 1/4" NPT	5000	1.26	3.43	4.72	3.31	.63	4.26	3.22	9.00	-	-	-	.51	9.0 lb
DB2-112-NPT	1 1/2" NPT	5000	1.57	3.92	5.13	3.58	.63	5.01	3.66	9.00	-	-	-	.51	11.5 lb
DB2-2-NPT	2" NPT	5000	1.97	4.52	5.52	3.94	.63	5.33	4.31	9.00	-	-	-	.51	15.5 lb

Model #	Thread	psi	Port	A	B	C	D	E	F	G	H	J	K	SW	Weight
DE2-04-SAE	7/16"-20	7250	.24	1.27	2.71	1.45	.37	1.75	1.10	4.75	.18	1.03	1.05	.32	1.0 lb
DE2-06-SAE	9/16"-18	7250	.39	1.58	2.84	1.65	.41	2.08	1.27	4.75	.26	1.24	1.38	.32	1.5 lb
DE2-08-SAE	3/4"-16	7250	.51	1.58	3.27	1.90	.41	2.08	1.39	4.75	.26	1.46	1.38	.32	1.5 lb
DE2-12-SAE	1 1/16"-12	5800	.79	2.25	3.74	2.36	.55	2.97	1.90	6.38	.26	1.76	1.99	.39	3.5 lb
DE2-16-SAE	1 5/16"-12	5000	.98	2.53	4.45	2.56	.55	3.25	2.25	6.38	.26	2.17	2.29	.39	5.0 lb
DE2-20R-SAE <i>Reduced Port</i>	1 5/8"-12	5000	.98	2.53	4.73	2.56	.55	3.25	2.37	6.38	.26	2.17	2.29	.39	5.5 lb
DE2-24R-SAE <i>Reduced Port</i>	1 7/8"-12	5000	.98	2.53	4.85	2.56	.55	3.25	2.37	6.38	.26	2.17	2.29	.39	6.0 lb
DB2-20-SAE	1 5/8"-12	5000	1.26	3.43	4.72	3.31	.63	4.26	3.22	9.00	-	-	-	.51	9.0 lb
DB2-24-SAE	1 7/8"-12	5000	1.57	3.92	5.13	3.58	.63	5.01	3.66	9.00	-	-	-	.51	11.5 lb
DB2-32-SAE	2 1/2"-12	5000	1.97	4.52	5.52	3.94	.63	5.33	4.31	9.00	-	-	-	.51	15.5 lb

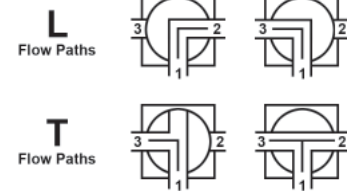
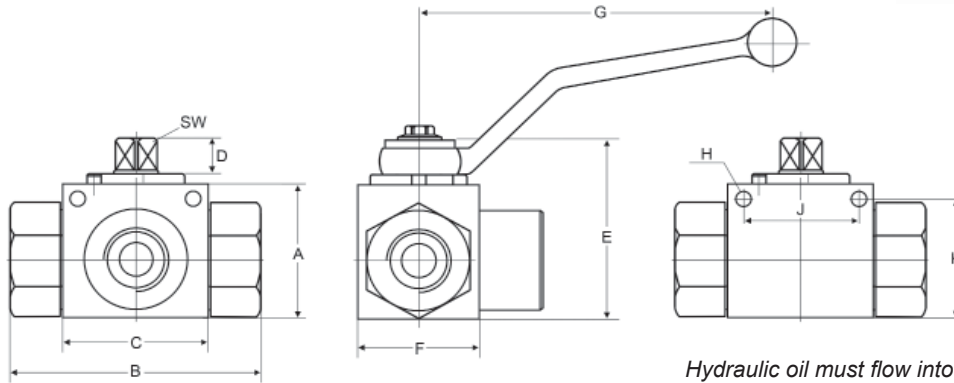
DE3L/DB3L High Pressure Series 3-way Ball Valves

Features

- Mounting Holes on DE models
- 1/4" - 2" Sizes - NPT and SAE
- Full and Reduced Port
- Blow-Out Proof Stems
- Max Pressure: Up to 5880 psi
- Max Temperature: 215°F

Materials

- Carbon Steel Construction
- Standard Seals: Buna-N; Seat: POM; Stem: Teflon; other seals by special order
- Chrome-plated Steel Ball



Hydraulic oil must flow into valve through port "1".
The valve can only be sealed under one of two conditions:
1) Pressure at the closed port is zero;
2) Pressure at the closed port is lower than at the two open ports.

Model #'s & Dimensional Information

Model #	Thread	psi	Port	A	B	C	D	E	F	G	H	J	K	SW	Weight
DE3L-14-NPT	1/4" NPT	5880	.24	1.27	2.72	1.46	.38	1.78	1.11	4.75	.18	1.02	1.07	.32	1.0 lb
DE3L-38-NPT	3/8" NPT	5880	.39	1.58	2.84	1.65	.38	2.08	1.26	4.75	.26	1.23	1.38	.32	1.5 lbs
DE3L-12-NPT	1/2" NPT	5145	.51	1.58	3.27	1.90	.38	2.08	1.37	4.75	.26	1.46	1.38	.32	2.0 lbs
DE3L-34-NPT	3/4" NPT	5145	.79	2.27	3.74	2.36	.55	2.97	1.89	6.38	.26	1.77	2.01	.39	4.0 lbs
DE3L-1-NPT	1" NPT	5145	.98	2.52	4.45	2.56	.55	3.25	2.24	6.38	.26	2.17	2.27	.39	5.5 lbs
DE3L-114R-NPT <i>Reduced Port</i>	1 1/4" NPT	4500	.98	2.53	4.72	2.56	.55	3.25	2.36	6.38	.26	2.17	2.29	.39	6.0 lbs
DE3L-112R-NPT <i>Reduced Port</i>	1 1/2" NPT	4500	.98	2.53	4.84	2.56	.55	3.25	2.36	6.38	.26	2.17	2.29	.39	6.5 lbs
DB3L-114-NPT	1 1/4" NPT	4500	1.26	3.31	4.73	3.31	.67	4.14	2.96	9.00	-	-	-	.51	10.5 lbs
DB3L-112-NPT	1 1/2" NPT	4500	1.57	3.74	5.14	3.59	.67	4.61	3.35	9.00	-	-	-	.51	14.0 lbs
DB3L-2-NPT	2" NPT	4500	1.97	4.43	5.51	3.94	.67	5.18	4.14	9.00	-	-	-	.51	20.0 lbs

Model #	Thread	psi	Port	A	B	C	D	E	F	G	H	J	K	SW	Weight
DE3L-04 SAE	7/16"-20	5880	.24	1.27	2.72	1.46	.38	1.78	1.11	4.75	.18	1.02	1.07	.32	1.0 lb
DE3L-06 SAE	9/16"-18	5880	.39	1.58	2.84	1.65	.38	2.08	1.26	4.75	.26	1.23	1.38	.32	1.5 lbs
DE3L-08 SAE	3/4"-16	5145	.51	1.58	3.27	1.90	.38	2.08	1.37	4.75	.26	1.46	1.38	.32	2.0 lbs
DE3L-12 SAE	1 1/16"-12	5145	.79	2.27	3.74	2.36	.55	2.97	1.89	6.38	.26	1.77	2.01	.39	4.0 lbs
DE3L-16 SAE	1 5/16"-12	5145	.98	2.52	4.45	2.56	.55	3.25	2.24	6.38	.26	2.17	2.27	.39	5.5 lbs
DE3L-20R SAE <i>Reduced Port</i>	1 5/8"-12	4500	.98	2.53	4.72	2.56	.55	3.25	2.36	6.38	.26	2.17	2.29	.39	6.0 lbs
DE3L-24R SAE <i>Reduced Port</i>	1 7/8"-12	4500	.98	2.53	4.84	2.56	.55	3.25	2.36	6.38	.26	2.17	2.29	.39	6.5 lbs
DB3L-20 SAE	1 5/8"-12	4500	1.26	3.31	4.73	3.31	.67	4.14	2.96	9.00	-	-	-	.51	10.5 lbs
DB3L-24 SAE	1 7/8"-12	4500	1.57	3.74	5.14	3.59	.67	4.61	3.35	9.00	-	-	-	.51	14.0 lbs
DB3L-32 SAE	2 1/2"-12	4500	1.97	4.43	5.51	3.94	.67	5.18	4.14	9.00	-	-	-	.51	20.0 lbs

"L" Port Standard. "T" Port available by special order, with minimum quantity.



FLUID COMPONENTS, INC.

DE3K/DB3K High Pressure Series 3-way Ball Valves

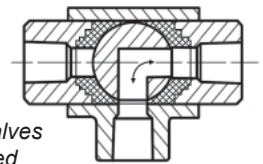
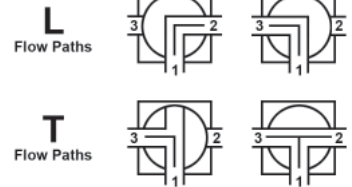
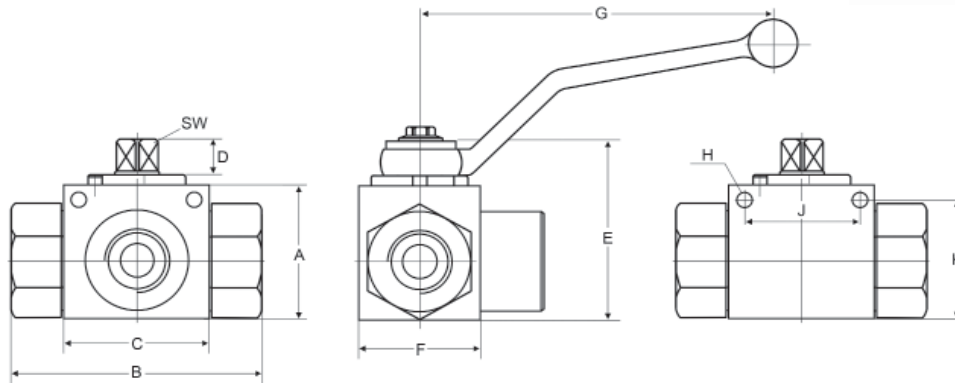
Available by Special Order Only

Features

- Mounting Holes on DE models
- 1/4" - 2" Sizes - NPT and SAE
- Full and Reduced Port
- Blow-Out Proof Stems
- Max Pressure: Up to 5880 psi
- Max Temperature: 215°F

Materials

- Carbon Steel Construction
- Standard Seals: Buna-N;
Seat: POM; Stem: Teflon;
other seals by special order
- Chrome-plated Steel Ball



* Dynamic seals in DE3K series valves allow for higher pressure at closed port without leakage.

Model #'s & Dimensional Information

Model #	Thread	psi	Port	A	B	C	D	E	F	G	H	J	K	SW	Weight
DE3K*-14-NPT	1/4" NPT	5880	.24	1.27	2.72	1.46	.38	1.78	1.11	4.51	.18	1.02	1.07	.32	1.0 lb
DE3K*-38-NPT	3/8" NPT	5880	.39	1.58	2.84	1.65	.38	2.08	1.26	4.51	.26	1.23	1.38	.32	1.5 lbs
DE3K*-12-NPT	1/2" NPT	5145	.51	1.58	2.28	1.90	.38	2.08	1.37	4.51	.26	1.46	1.38	.32	2.0 lbs
DE3K*-34-NPT	3/4" NPT	5145	.79	2.27	3.74	2.36	.55	2.97	1.89	6.38	.26	1.77	2.01	.39	4.0 lbs
DE3K*-1-NPT	1" NPT	5145	.98	2.52	4.45	2.56	.55	3.25	2.24	6.38	.26	2.17	2.27	.39	5.5 lbs
DE3K*-114R-NPT <i>Reduced Port</i>	1 1/4" NPT	4500	.98	2.53	4.72	2.56	.55	3.25	2.36	6.38	.26	2.17	2.29	.39	6.0 lbs
DE3K*-112R-NPT <i>Reduced Port</i>	1 1/2" NPT	4500	.98	2.53	4.84	2.56	.55	3.25	2.36	6.38	.26	2.17	2.29	.39	6.5 lbs

Model #	Thread	psi	Port	A	B	C	D	E	F	G	H	J	K	SW	Weight
DE3K*-04 SAE	7/16"-20	5880	.24	1.27	2.72	1.46	.38	1.78	1.11	4.51	.18	1.02	1.07	.32	1.0 lb
DE3K*-06 SAE	9/16"-18	5880	.39	1.58	2.84	1.65	.38	2.08	1.26	4.51	.26	1.23	1.38	.32	1.5 lbs
DE3K*-08 SAE	3/4"-16	5145	.51	1.58	2.28	1.90	.38	2.08	1.37	4.51	.26	1.46	1.38	.32	2.0 lbs
DE3K*-12 SAE	1 1/16"-12	5145	.79	2.27	3.74	2.36	.55	2.97	1.89	6.38	.26	1.77	2.01	.39	4.0 lbs
DE3K*-16 SAE	1 5/16"-12	5145	.98	2.52	4.45	2.56	.55	3.25	2.24	6.38	.26	2.17	2.27	.39	5.5 lbs
DE3K*-20R SAE <i>Reduced Port</i>	1 5/8"-12	4500	.98	2.53	4.72	2.56	.55	3.25	2.36	6.38	.26	2.17	2.29	.39	6.0 lbs
DE3K*-24R SAE <i>Reduced Port</i>	1 7/8"-12	4500	.98	2.53	4.84	2.56	.55	3.25	2.36	6.38	.26	2.17	2.29	.39	6.5 lbs

* "L" and "T" Ports available. Minimum quantity may apply.

Ball Valve Locking Kits

Model #'s & Descriptions

Model #	Description
DLK-S	"U" Locking Kit for DE Models: 1/4" - 1/2" Full Port Sizes
DLK-M	"U" Locking Kit for DE Models: 3/4" - 1" Full Ports & 1 1/4" - 1 1/2" Reduced Ports
DLK-L	"U" Locking Kit for DB Models: 1 1/4" - 2" Full Ports Sizes
LK-S-SS	Flat Locking Kit for DE Models: 1/4" - 1/2" Full Port Sizes
LK-M-SS	Flat Locking Kit for DE Models: 3/4" - 1" Full Ports & 1 1/4" - 1 1/2" Reduced Ports
LK-L-SS	Flat Locking Kit for DB Models: 1 1/4" - 2" Full Port Sizes



"U" Style



Flat Style

Not sure how to install your locking kit?

Visit: <https://www.youtube.com/watch?v=YjUedUGMxYM> to watch a short video demonstration on installing our "U" style locking kits.

Ball Valve Handles

Model #'s & Descriptions

Model #	Description	Length
SW9 - Sm. Silver Handle (DE 1/4" - 1/2")	SW9 Small Silver Handle for DE2 / DE3 1/4" - 1/2" Full Port Sizes	4.51"
SW14 - Med. Silver Handle (DE 3/4"-1 1/2")	SW14 Medium Silver Handle for DE2 / DE3 3/4" - 1" Full Port Sizes & 1 1/4" - 1 1/2" Reduced Ports	6.38"
SW17 - Lg. Silver Handle (DB 1 1/4"-2")	SW17 Large Silver Handle for DB2 / DB3 1 1/4" - 2" Full Port Sizes	9.00"

Seal Options

All Ball Valves come standard with Buna-N seals. Viton and other seal options available by special order. Contact Dynamic for options and availability.



FLUID COMPONENTS, INC.

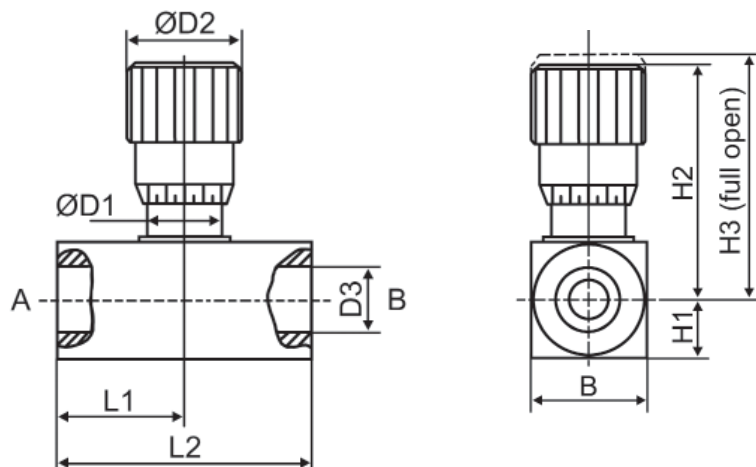
JP-NV Series Needle Valve

Features

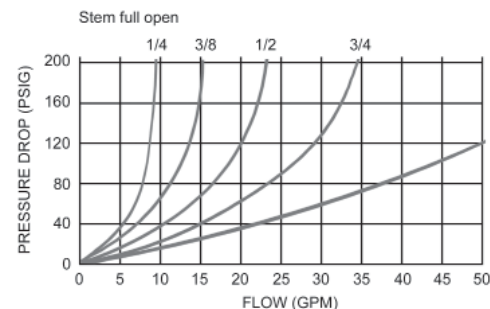
- Micrometer adjustment knob for accurate valve setting
- Rugged construction
- Maximum Pressure: 5000 psi
- Temperature Range: -4° to 176°F (-20°C to 80°C)
- Allen Head Lock Screw to Lock Handle in Place

Materials

- Body: Carbon steel with black oxide plating
- Handle: Zinc Alloy
- Set Screw: Steel
- Packing: Buna O-Ring/PTFE stem packing



Performance



Model #'s & Dimensional Information

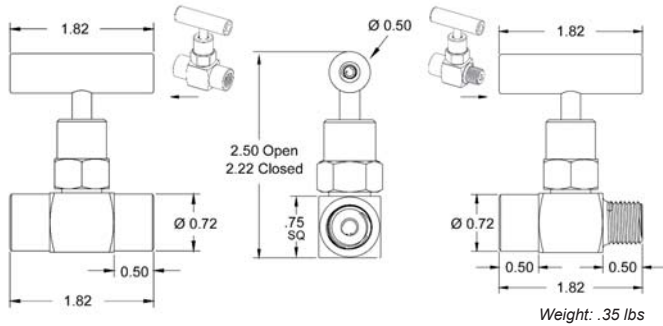
Model #	B	D1	D2	D3	H1	H2	H3	L1	L2	Weight
JP-NV-1/4 NPT	1.10"	.76"	1.18"	1/4" NPT	.55"	2.41"	2.67"	1.065"	2.13"	.90 lbs
JP-NV-3/8 NPT	1.10"	.76"	1.18"	3/8" NPT	.55"	2.41"	2.67"	1.065"	2.13"	.90 lbs
JP-NV-1/2 NPT	1.50"	.95"	1.46"	1/2" NPT	.75"	3.07"	3.41"	1.34"	2.68"	2.00 lbs
JP-NV-3/4 NPT	1.50"	.95"	1.46"	3/4" NPT	.75"	3.08"	3.41"	1.54"	3.07"	2.00 lbs
JP-NV-1 NPT	1.89"	1.38"	1.89"	1" NPT	.94"	4.03"	4.50"	1.81"	3.62"	4.20 lbs
JP-NV-1 1/4 NPT	2.39"	1.74"	2.26"	1 1/4" NPT	1.20"	5.34"	5.88"	2.24"	4.49"	7.50 lbs
JP-NV-1 1/2 NPT	2.76"	2.38"	3.17"	1 1/2" NPT	1.38"	6.30"	7.13"	2.41"	4.81"	15.40 lbs
JP-NV-06-SAE	1.10"	.76"	1.18"	06 SAE	.55"	2.41"	2.67"	1.065"	2.13"	.90 lbs

High Pressure Series Needle Valve

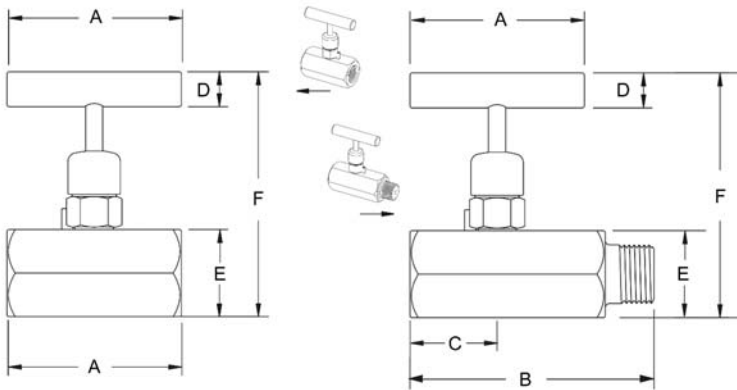
Features

- Rated up to 10,000 psi at 200°F
- Zinc-nickel plated steel body with 316SS stem
- Blow out proof stem
- Slotted spring pin prevents accidental loosening

Dimensions for 1/8" Valves



Dimensions for 1/4" - 1 1/2" Valves



The HPNV series of high pressure needle valves replaces the DFFG series which we previously offered. A quick cross reference is provided below.

Old Part #	New Part #
DFFG2001T	HPNV-1/8NPT-FF
DFFG2002T	HPNV-1/4NPT-FF
DFFG2003T	HPNV-3/8NPT-FF
DFFG2004T	HPNV-1/2NPT-FF
DFFG2006TA	HPNV-3/4NPT-FF
DFFG2008TA	HPNV-1NPT-FF

Valve Size	A	B	C	D	E	F		Weight
						Closed	Open	
1/4" - 1/2" NPT	2.5"	3.5"	1.25"	$\varnothing 0.5$ "	1.25" Hex	3.50"	3.78"	1.10 lbs
3/4" - 1 1/2" NPT	4.25"	5.25"	2.125"	$\varnothing 0.75$ "	2.25" Hex"	4.75"	5.50"	5.20 lbs

Ordering Example:

Model: **HPNV** - Size: **1 NPT** - Connection: **FF**

Model	Size	Connection
HPNV	1/8 NPT	3/4 NPT
	1/4 NPT	1 NPT
	3/8 NPT	1 1/4 NPT
	1/2 NPT	1 1/2 NPT



FLUID COMPONENTS, INC.

JP-FC Series

Flow Control Valve

Features

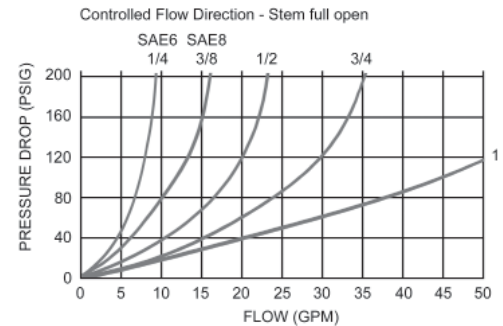
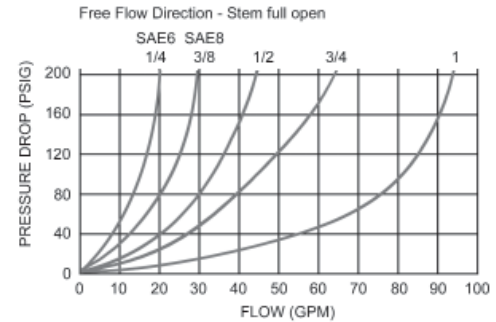
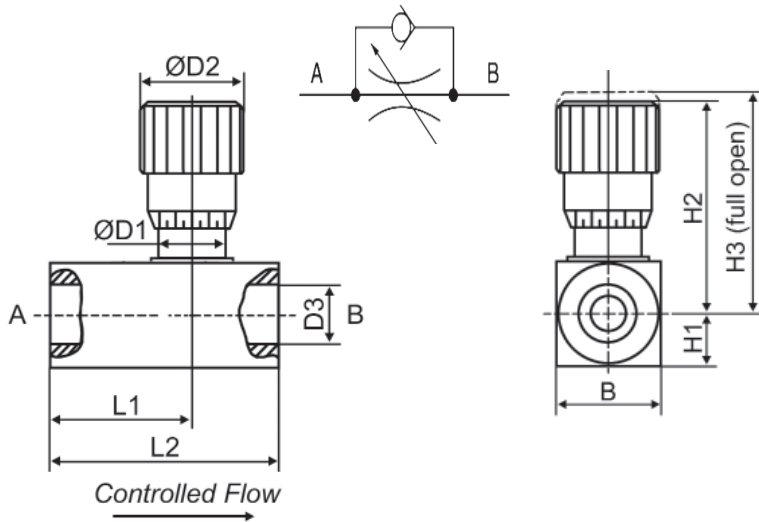
- Micrometer adjustment knob for accurate valve setting
- Rugged construction
- Maximum Pressure: 5000 psi
- Temperature Range: -4° to 176°F (-20°C to 80°C)
- Allen Head Lock Screw to Lock Handle in Place

Materials

- Body: Carbon steel with black oxide plating
- Handle: Zinc Alloy
- Set Screw: Steel
- Packing: Buna O-Ring/PTFE stem packing



Performance



Model #'s & Dimensional Information

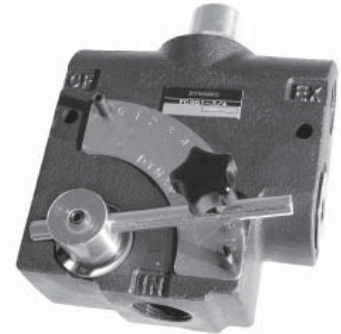
Model #	B	D1	D2	D3	H1	H2	H3	L1	L2	Weight
JP-FC-1/4 NPT	1.10"	.76"	1.18"	1/4" NPT	.55"	2.41"	2.67"	1.54"	2.52"	.90 lbs
JP-FC-3/8 NPT	1.10"	.76"	1.18"	3/8" NPT	.55"	2.41"	2.67"	1.69"	2.75"	.90 lbs
JP-FC-1/2 NPT	1.50"	.95"	1.46"	1/2" NPT	.75"	3.07"	3.41"	2.05"	3.27"	2.00 lbs
JP-FC-3/4 NPT	1.50"	.95"	1.46"	3/4" NPT	.75"	3.08"	3.41"	2.19"	3.50"	2.00 lbs
JP-FC-1 NPT	1.89"	1.38"	1.89"	1" NPT	.94"	4.03"	4.50"	2.79"	4.60"	4.20 lbs
JP-FC-1-1/4 NPT	2.38"	1.96"	2.28"	1 1/4" NPT	1.18"	5.25"	5.88"	3.39"	6.07"	9.55 lbs
JP-FC-SAE6	1.10"	.76"	1.18"	06 SAE	.55"	2.41"	2.67"	1.69"	2.75"	.90 lbs
JP-FC-SAE8	1.50"	.95"	1.46"	08 SAE	.75"	3.07"	3.41"	2.05"	3.27"	2.00 lbs



FLUID COMPONENTS, INC.

Pressure Compensating Variable Flow Control

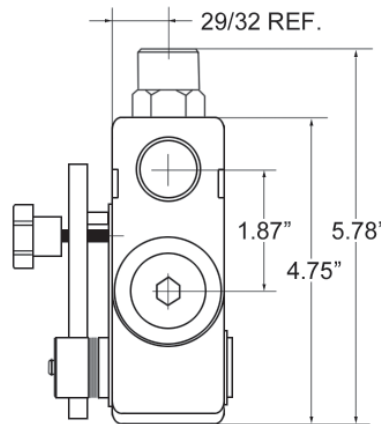
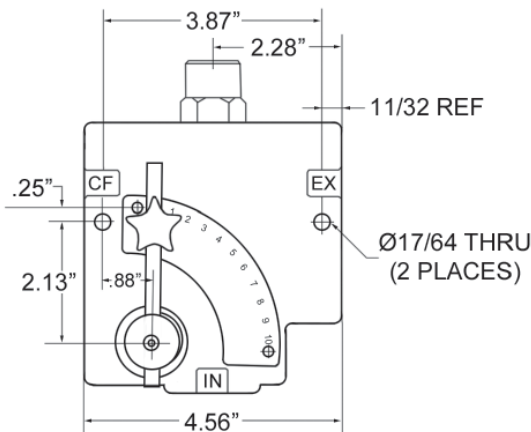
Model DFC-51 is a full-range pressure compensating variable flow control. It is designed so that the orifice area varies as the lever is rotated. The outlet flow is smooth and constant regardless of the pressure on the control flow or excess flow ports. An adjustable ball spring relief allows for pressure compensated flow up to the pressure setting on the relief with accuracy to 150psi. Relief valves are preset at 2100 psi and field adjustable from 75 to 3000 psi. Weight: 9.00 lbs.



Materials

- Cast Iron Body
- Heat Treated Compensator Spool
- Stainless Steel Rotary Spool
- Buna-N "O" Rings

Installation Data



Ordering Example:

Model Relief Series Ports
DFC - **R** - **51** - **34-N**

Model	Relief Option	Series	Port Size & Flow
DFC	R = Adj. Ball Spring Relief N = No Relief B* = Extended Relief (+/- 30psi accuracy)	51	38-N = 3/8" NPT (0-8 gpm) 12-N = 1/2" NPT (0-16 gpm) 34-N = 3/4" NPT (0-30 gpm) 06-S = 06 SAE (0-8 gpm) 08-S = 08 SAE (0-16 gpm) 10-S = 10 SAE (0-16 gpm) 12-S = 12 SAE (0-32 gpm)

*Special Order Only

GAUGES, VALVES, ETC.

HYDRAULIC PUMPS

HYDRAULIC MOTORS

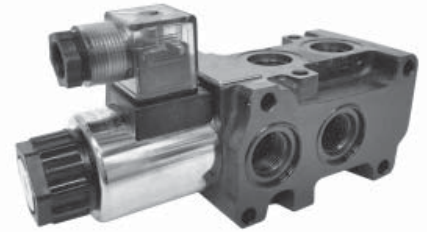
APPENDIX



FLUID COMPONENTS, INC.

Model DSV Selector Valve

The DSV 12-volt DC selector valve is operated by a continuously rated wet pin solenoid. This is capable of switching from one circuit to another at a variety of flows and pressures. The DSV may be connected to the service ports of a directional control valve and used to direct service line flow to and from either of two separate devices. If more than two circuits are to be controlled, additional units can be stacked together (max of 3), minimizing the need for pipes and fittings. Also the DSV series valves can be connected to a pump and used to direct the flow to either one of two different circuits.

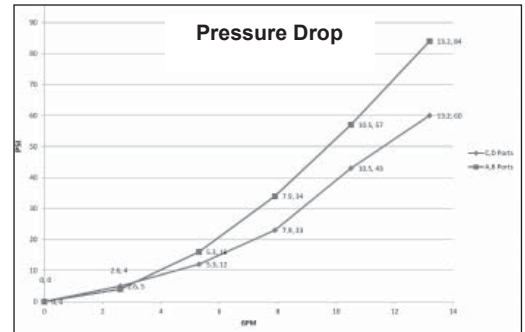


Technical Specifications

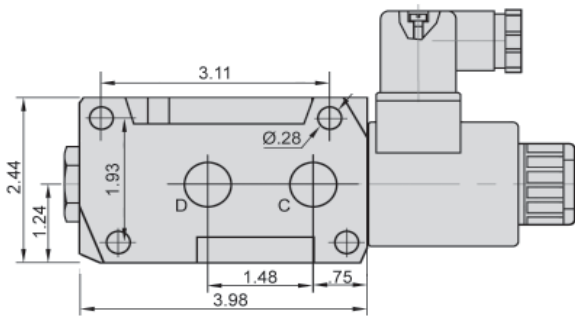
Hydraulic		
Port Size	SAE-08	SAE-10
Max Flow Rate	13.2 gpm	24.0 gpm
Operating Pressure	3600 psi	3600 psi
Oil Temp Range	-4°F - 158°F	-4°F - 158°F
Viscosity Range	70-1790 SSu	70-1790 SSu
Filtration Requirement	NAS 1638 8	NAS 1638 8
Weight	6.5 lbs	11.5 lbs

Electrical	
Supply Voltage	12/24 VDC
Amperage Rating	2.50A for DC 12V 1.21A for DC 24V
Max Ambient Temp	125° F
Max Coil Temp	356° F
Duty Cycle	Continuous

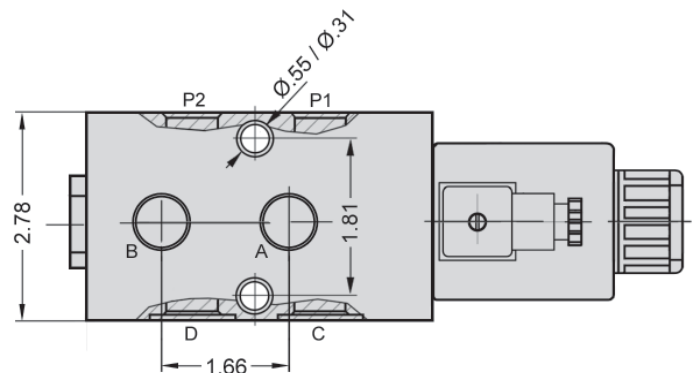
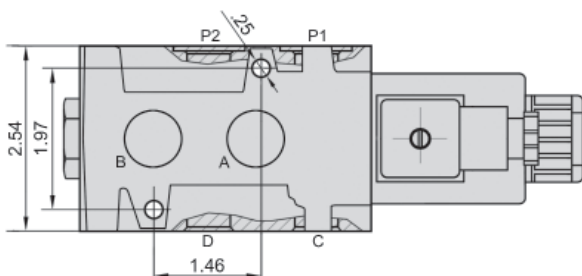
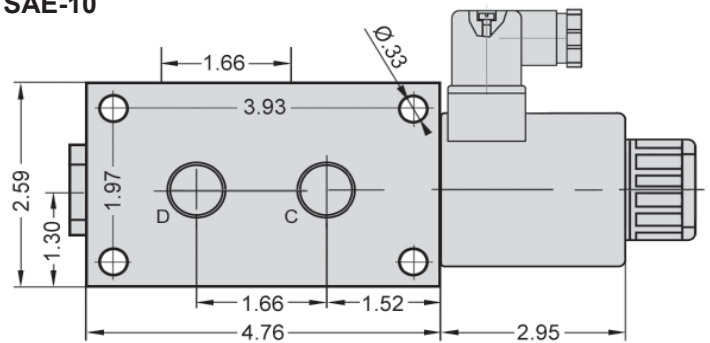
Spool Function



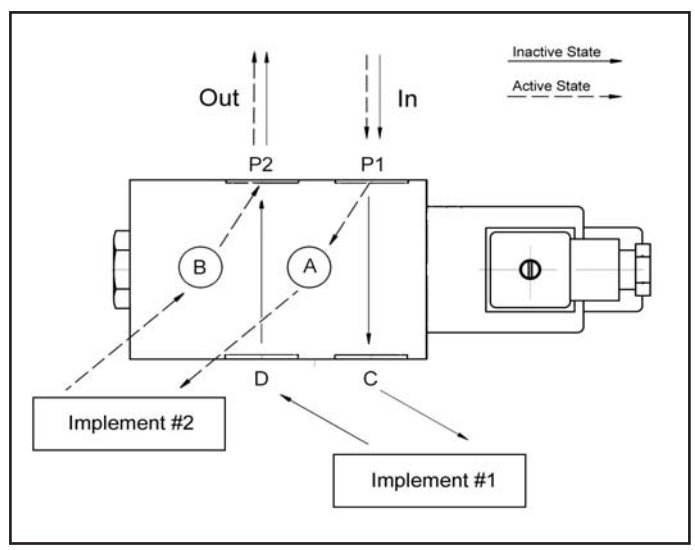
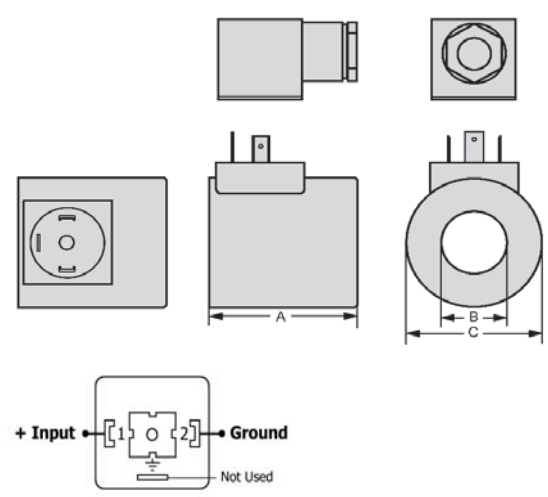
SAE-08



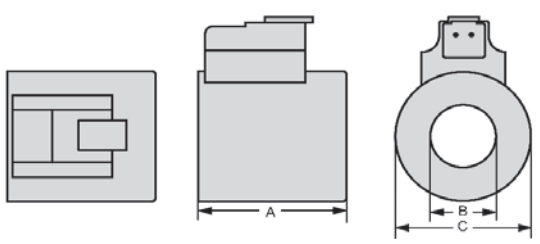
SAE-10



DIN Connector

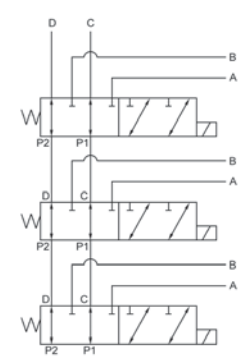


Deutsch Connector



Stacking Valves

DSV Selector Valves can be stacked together to provide multiple circuit capacity. Up to 3 units can be stacked as the diagram below shows.



Coil Dimensions

Size	A	B	C
SAE-08	1.99"	.91"	1.77"
SAE-10	2.96"	1.22"	2.48"

Ordering Example: Model **DSV** - Style **62** - Port Size **08** - Supply Voltage **12** - Connector **DIN**

Model	Style	Port Size**	Supply Voltage	Connector**
DSV= Dynamic Selector Valve	62 = 6-way, 2-Station	08 = SAE-08 10 = SAE-10	12 = 12VDC 24* = 24VDC 110* = 110VAC	DIN = DIN DEU = Deutsch

* Special Order
 ** Additional port sizes and connectors may be available by special order.



FLUID COMPONENTS, INC.

Model JPLS-3000

Log Splitter Control Valve

Model JPLS-3000 offers a hydraulically-balanced, chrome-plated spool and pressure release detent adjustable from 1000 to 2000 psi. Recommended for systems with flows up to 25 gpm, the JPLS-3000 relief valve is adjustable up to 2750 psi. When the tandem center spool is in neutral position, hydraulic flow is diverted to the return line. This is used to hold the cylinder/piston in position with no load on the pump, keeping wear and tear on the pump to a minimum.

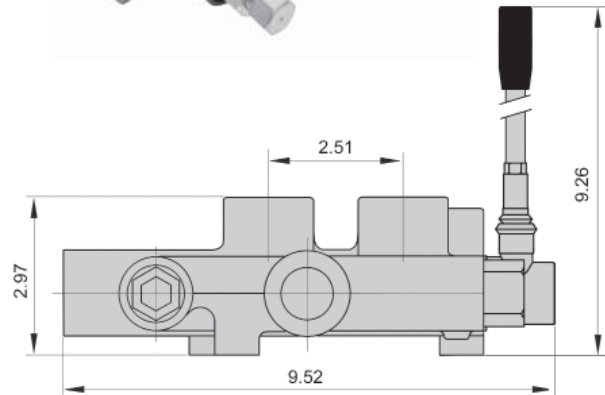
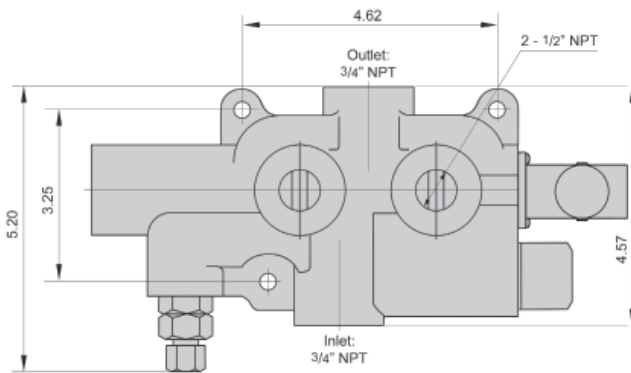
Technical Specifications

- Max Operating Pressure: 2750 psi
- Max Tank Pressure: 150 psi
- Max Flow Rating: 25 gpm
- Relief Valve Setting: 2250 psi
- Recommended Filtration: ISO 4406 19/17/14
- Max Operating Temperature: 180°F
- Standard Port Size: 3/4" NPT / 1/2" NPT
- Weight: 10 lbs

In exposed applications, do not mount with spool vertical and handle down.



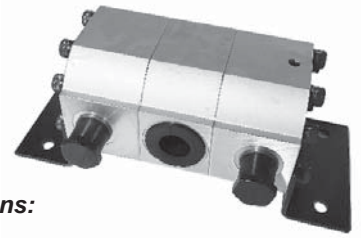
Installation Data



Ordering Example:

Model **JPLS** - Series **3000**

Model FDA Gear Flow Divider



Model FDA is a rotary gear flow divider with 6 displacements from .129 to .517 in³/rev (2.13 to 8.42 cm³/rev). Maximum flow rates of 2.5 to 8.5 gpm are available across the displacement range. Standard ports are SAE, sizes are noted in the data chart below. Relief preset at 3000psi. Aluminum body.

Recommended working conditions:

FILTRATION: 25 micron or better
 OIL VISCOSITY: 6 - 200 cSt
 OIL TEMPERATURE: -25° - 80° C (-12° - 175° F)
 AMBIENT -22° - 55° C (-8° - 130° F)

Technical Specifications

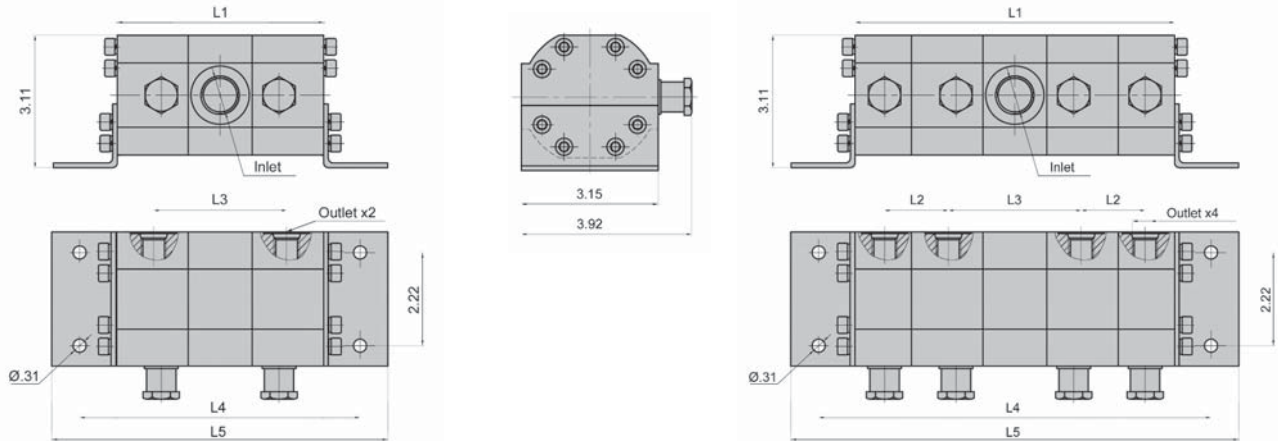
Specifications based on using Petroleum oil at 120°F (49°C), viscosity 150 SUS at 100°F and 0 inlet pressure.
 Maximum Outlet Pressure: 3500 psi (240 bar)

Model	Displacement		Flow per Section (gpm)		Dimensions							Weight
	in ³ /rev	cm ³ /rev	min	max	Inlet	Outlet	L1	L2	L3	L4	L5	lbs
FDA-2*-129*	.129	2.13	1.20	2.5	SAE 8	SAE 8	4.25	-	2.87	6.02	7.24	4.45
FDA-2*-258*	.258	4.24	2.50	5.0	SAE 10	SAE 6	4.84	-	2.99	6.61	7.83	5.40
FDA-2*-517*	.517	8.42	4.50	9.0	SAE 10	SAE 10	6.02	-	4.17	7.79	9.02	6.25
FDA-4*-129*	.129	2.13	1.20	2.0	SAE 8	SAE 8	7.72	1.58	3.23	9.49	10.71	9.59
FDA-4*-258*	.258	4.24	2.50	4.2	SAE 10	SAE 6	8.86	1.81	3.43	10.63	11.85	10.37
FDA-4*-517*	.517	8.42	4.50	8.5	SAE 10	SAE 10	11.22	2.40	4.61	12.99	14.21	11.15

Flow Rate (gpm) = Displacement (in³/rev) X Speed (rpm) / 231

Volumetric efficiency % ≥93

Installation Data



Ordering Example: **FDA** - **2** - **N** - **258** - **S**

Category	Series	Relief	Displacement	Ports
FDA = Flow Divider	2 - 2-section 4* - 4-section	N = No Relief Valve R* = Relief Valve	129 258 517	S - SAE

*Special Order - minimums may apply



FLUID COMPONENTS, INC.

Model DYFB

Spool Flow Divider



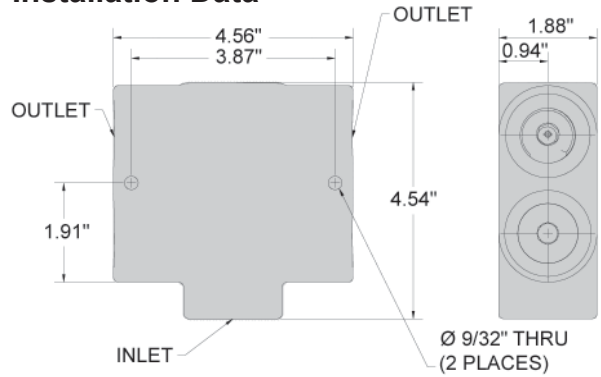
Features

- Precision ground heat treated spool
- Pressure compensation for both outlet ports
- Divides inlet flow into two flows of equal flow (other ratios available with minimum order)
- Maximum Pressure: 3000 psi
- Optional free reverse flow allows fluid to move from the outlet ports to the inlet port

Materials

- Cast Iron Body
- Buna N "O" Rings
- Heat Treated Steel Spool
- Heat Treated Free Reverse Check Seat

Installation Data



Technical Specifications

Port Size	Min. Flow each section	Max. Flow each section	Max. Outlet Pressure	Weight
3/8" NPT	2 gpm	8 gpm	3000 psi	7.25 lbs
1/2" NPT	8 gpm	16 gpm		7.25 lbs
3/4" NPT	16 gpm	30 gpm		7.25 lbs
SAE-10	8 gpm	16 gpm		7.25 lbs
SAE-12	16 gpm	30 gpm		7.25 lbs

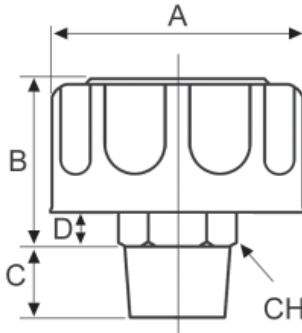
Ordering Example: Model: **DYFB** Flow Options: **100** Port Size: **1/2**

Category	Flow Options	Port Size
DYFB = Flow Divider	50* = Inlet to Outlet 100 = Free Reverse Flow	3/8 = 3/8" NPT 1/2 = 1/2" NPT 3/4 = 3/4" NPT 10SAE = SAE-10 12SAE = SAE-12

*Special Order - minimums may apply

Features

- 40 Micron Breather
- Cap: Chrome-plated Steel
- Connector: Galvanized Steel
- Sizes: 1/4" to 1" NPT
- Working Temp: -13° - 230°F



Dimensional Information

Model #	Thread	A	B	C	D	CH	Micron	Flow	Weight
DB40-04	1/4" NPT	1.80"	1.38"	.48"	.25"	.75"	40	40 gpm	.20 lbs
DB40-06	3/8" NPT	1.80"	1.38"	.48"	.25"	.75"	40	79 gpm	.20 lbs
DB40-08	1/2" NPT	2.55"	1.45"	.71"	.28"	.95"	40	119 gpm	.30 lbs
DB40-12	3/4" NPT	3.15"	1.60"	.82"	.39"	1.18"	40	198 gpm	.50 lbs
DB40-16	1" NPT	3.15"	1.60"	.88"	.47"	1.38"	40	225 gpm	.70 lbs

Ordering Example:

Model: **DB** Filtration: **40** Connection: **04**

Model	Filtration	Connection
DB = Designation for Breathers	40 = 40 micron	04 = 1/4" NPT 06 = 3/8" NPT 08 = 1/2" NPT 12 = 3/4" NPT 16 = 1" NPT



FLUID COMPONENTS, INC.

DFB Series

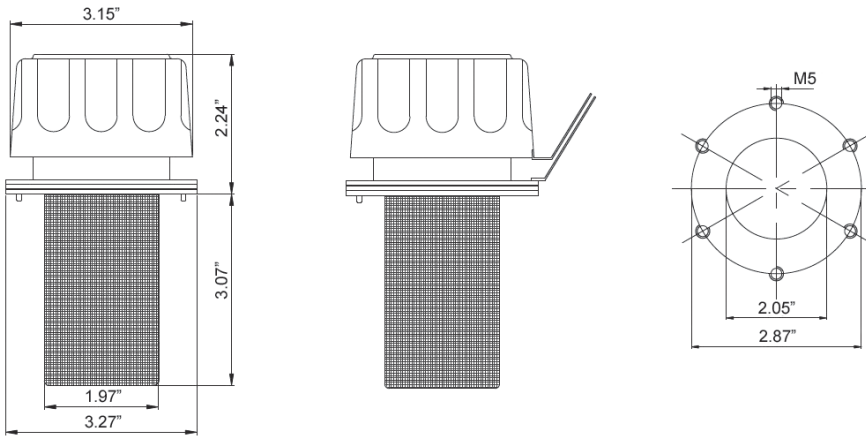
Filter Filler Breathers

Features

- Chrome Plated Steel Cap
- 40 Micron Breather
- 119 GPM Flow Rate
- 3" Metal Basket
- Lockable Option
- Weight: .75lbs



Installation Data



Ordering Example: **Model** **Filtration** **Basket Length** **Options**
DFB 40 - 03 - MB

Model	Filtration	Basket Length	Options
DFB = Designation for Filter Breathers	40 = 40 micron	03 = 3"	MB = Standard Metal Basket L = Lockable

Consult Factory for ordering caps or baskets only

Color-coated, marked hose grips make identifying your hydraulic lines simple. Durable, anti-slip aluminum body ensures handling with gloves or oily hands is safe and easy.

Features

- Multiple thread types & sizes
- Custom colors & optional laser engraving available with minimum order qty
- Anti-slip, textured aluminum grip
- Extended nose to ensure safe connection



Ordering Example:

Model: **HG** - Thread: **S08** - Design: **[]** - Color: **RED** - Marking: **POS**

Model	Thread*	Design	Color	Marking**
HG	S06 - SAE-06	N3/8 - 3/8" NPT	Black	Omit - No marking
	S08 - SAE-08	N1/2 - 1/2" NPT	Red	POS - Positive
	S10 - SAE-10	N3/4 - 3/4" NPT	Blue*	NEG - Negative
			Green*	LOGO - Special Request
			Purple*	
			Silver*	
			Yellow*	

* Available by special order only, minimum quantity required. Other colors may be available for bulk OEM orders.

** Other threads/sizes available with minimum order.

*** Custom marking available with minimum order.



Quick Disconnect Flush Face Couplings

Flush Face Hydraulic Couplings are widely used in the public utility market where hydraulic oil spillage can constitute a serious safety hazard. For use in hammer circuits and high pressure pulse applications. Flush Face couplings are also used for the quick change of hydraulic tools in construction, railway, maintenance and mining industries and are commonly found on excavators and skid steer loaders.



Materials

- Zinc / Zinc-Nickel-plated Carbon Steel Body
- Standard Nitrile NBR Seals with PTFE Back-up Ring

Features

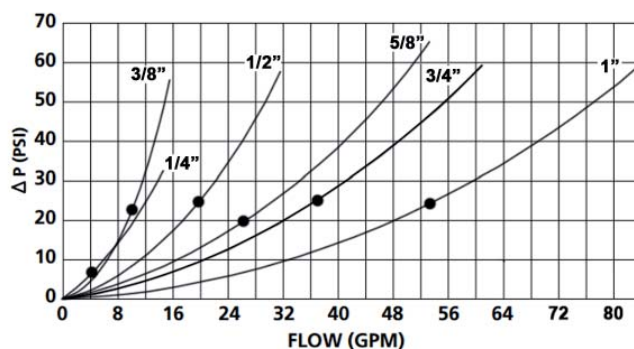
- Conforms to the ISO16028 Standard
- One-handed operation makes connection and disconnection easy with less fluid loss
- Locking sleeve ensures solid connection and prevents accidental disconnection
- Flush Face valving is easily wiped clean and reduces the introduction of air and contaminants during connection and when in use
- Design resists damage from high pressure pulse applications
- Working temperature: -13°F to +257°F with standard seal

BODY SIZE	1/4"	3/8"	1/2"	5/8"	3/4"	1"
Max Working Pressure (PSI)	6092	5511	5076	5076	5076	5076
Flow (GPM)						
Rated	3.2	6.1	11.9	19.5	26.4	49.9
Max	6.3	12.2	23.8	39.6	52.8	74.0
Liquid Spillage (ml)	.008	.010	.012	.015	.020	.030

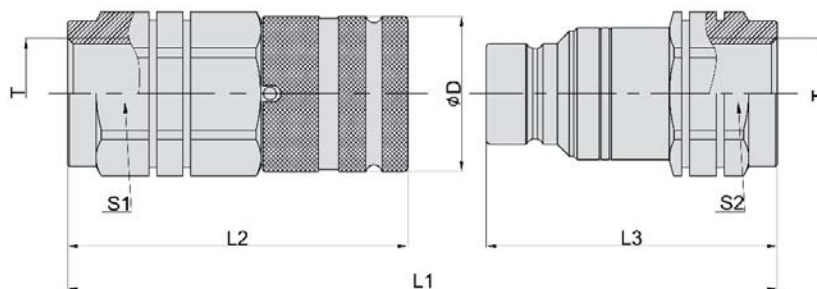
Interchangeable With

- Parker FEM
- Faster 2FFI
- Dixon HT
- Eaton FF
- Voswinkel FF/FH
- Safeway S56
- Hansen 12FFP(S)106U
- DNP PLT1
- Holmbury HQ
- Stucchi FIRG
- Aeroquip FD89
- Snap Tite 74
- Tomco FE

Pressure Drop



FF Series - Flush Face Hydraulic Coupling (Steel) NPT Threads



BODY SIZE	FEMALE SOCKET MODEL #	MALE PLUG MODEL #	L1	L2	L3	ØD	S1	S2	T
1/4"	QD-FF-1/4-1/4NPT-F	QD-FF-1/4-1/4NPT-M	3.98	2.19	2.06	1.10	1.06	0.87	1/4" NPT
1/4"	QD-FF-1/4-3/8NPT-F	QD-FF-1/4-3/8NPT-M	3.98	2.19	2.06	1.10	1.06	0.87	3/8" NPT
3/8"	QD-FF-3/8-3/8NPT-F	QD-FF-3/8-3/8NPT-M	4.45	2.71	2.36	1.26	1.18	1.18	3/8" NPT
3/8"	QD-FF-3/8-1/2NPT-F	QD-FF-3/8-1/2NPT-M	4.76	2.91	2.48	1.26	1.18	1.18	1/2" NPT
1/2"	QD-FF-1/2-1/2NPT-F	QD-FF-1/2-1/2NPT-M	5.44	3.30	2.81	1.50	1.42	1.42	1/2" NPT
1/2"	QD-FF-1/2-3/4NPT-F	QD-FF-1/2-3/4NPT-M	5.44	3.30	2.81	1.50	1.42	1.42	3/4" NPT
5/8"	QD-FF-5/8-3/4NPT-F	QD-FF-5/8-3/4NPT-M	5.49	3.31	2.87	1.65	1.61	1.42	3/4" NPT
3/4"	QD-FF-3/4-3/4NPT-F	QD-FF-3/4-3/4NPT-M	6.35	3.88	3.31	1.89	1.81	1.81	3/4" NPT
3/4"	QD-FF-3/4-1NPT-F	QD-FF-3/4-1NPT-M	6.35	3.88	3.31	1.89	1.81	1.81	1" NPT
1"	QD-FF-1-1NPT-F	QD-FF-1-1NPT-M	7.04	4.39	3.54	2.17	2.17	2.17	1" NPT
1"	QD-FF-1-1.25NPT-F	QD-FF-1-1.25NPT-M	7.04	4.39	3.54	2.17	2.17	2.17	1.25" NPT

Ordering Example:

QD -
 FF -
 3/4 -
 1NPT -
 F

Model	Series	Body Size	Thread	Plug/Socket
QD = Quick Disconnect	FF = Flat Face	1/4	1/4 NPT	F = Female Socket
		3/8	3/8 NPT	M = Male Plug
		1/2	1/2 NPT	
		5/8	3/4 NPT	
		3/4	1 NPT	
		1	1.25 NPT	



FLUID COMPONENTS, INC.

Quick Disconnect ISO A Couplings

The versatile ISO A Couplings are used in a wide range of hydraulic applications, including agricultural, mobile and construction equipment. They are also used on in-plant machinery including hydraulic power units and hand tools and can be found any place where the fluid transfer lines need to be connected and disconnected for operation or maintenance.



Materials

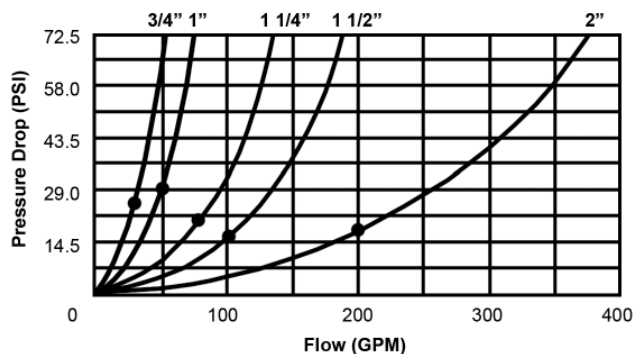
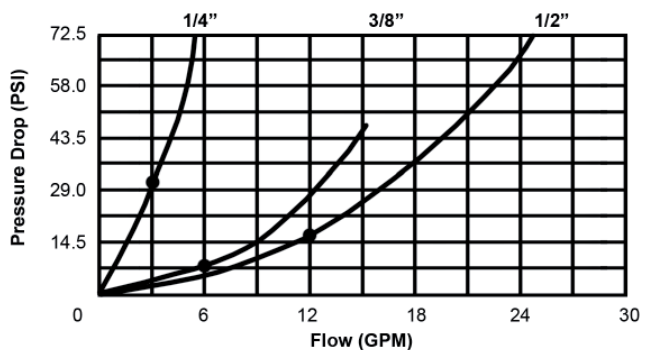
- Zinc-plated Carbon Steel
- Standard Nitrile NBR Seals with PTFE Back-up Ring

Features

- Built in accordance with standard ISO7241-1A
- A variety of metal options allow for use with most fluids.
- Poppet valve allows for larger flow.
- Locking ball system allows quick connection & disconnection.
- Bi-directional flow
- Working temperature: -13°F + 257°F with standard seal

BODY SIZE	1/4"	3/8"	1/2"	3/4"	1"	1.25"	1.5"	2"
Max Working Pressure (PSI)	5076	5076	3626	3626	3626	2901	2756	2321
Flow (GPM)								
Rated	3.2	6.1	11.9	28.0	50	76	100	200
Max	4.5	12.2	23.8	50.2	74	127	200	264
Liquid Spillage (ml)	0.5	1.9	2.7	9.3	16	30	54	120

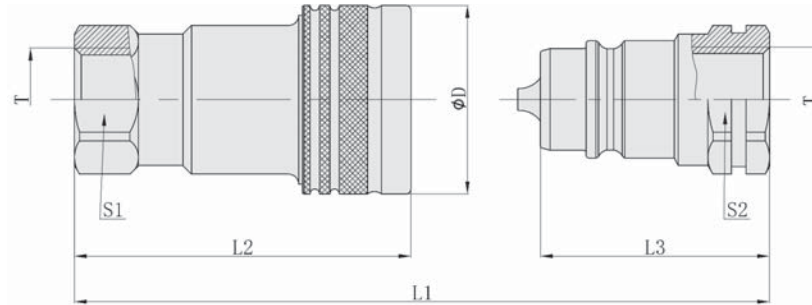
Pressure Drop



Interchangeable With

- Parker 6600
- Eaton 5600
- Snap Tite 61
- Hansen HA15000
- DNP PAV
- Voswinkel IA
- Dixon K
- Faster ANV
- Stucchi BIR
- Safeway S56
- Holmbury IA
- Aeroquip FD56
- Tomco A5600

ISO A Series - Hydraulic Coupling (Steel) NPT Threads



BODY SIZE	FEMALE SOCKET MODEL #	MALE PLUG MODEL #	L1	L2	L3	ØD	S1	S2	T
1/4"	QD-A-1/4NPT-F	QD-A-1/4NPT-M	2.78	1.94	1.38	1.02	0.75	0.75	1/4" NPT
3/8"	QD-A-3/8NPT-F	QD-A-3/8NPT-M	3.37	2.38	1.67	1.20	0.87	0.87	3/8" NPT
1/2"	QD-A-1/2NPT-F	QD-A-1/2NPT-M	3.66	2.70	1.83	1.50	1.06	1.06	1/2" NPT
3/4"	QD-A-3/4NPT-F	QD-A-3/4NPT-M	4.50	3.31	2.25	1.81	1.34	1.34	3/4" NPT
1"	QD-A-1NPT-F	QD-A-1NPT-M	5.19	3.92	2.58	2.05	1.61	1.61	1" NPT
1.25"	QD-A-1.25NPT-F	QD-A-1.25NPT-M	5.83	4.57	2.91	2.74	1.97	1.97	1 1/4" NPT
1.5"	QD-A-1.5NPT-F	QD-A-1.5NPT-M	6.61	5.30	3.31	3.23	2.36	2.36	1 1/2" NPT
2"	QD-A-2NPT-F	QD-A-2NPT-M	7.88	6.30	3.94	3.90	2.95	2.95	2" NPT

Dust Protectors

Plug for Female Socket

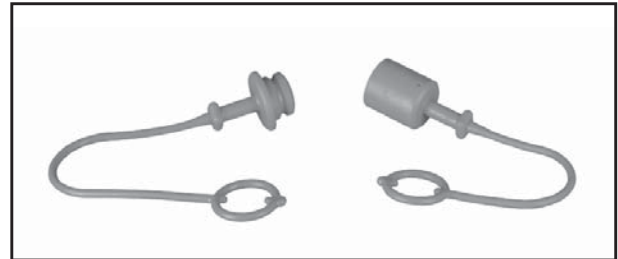
BODY SIZE	MODEL #
1/4"	QD-A-1/4-PLUG
3/8"	QD-A-3/8-PLUG
1/2"	QD-A-1/2-PLUG
3/4"	QD-A-3/4-PLUG
1"	QD-A-1-PLUG

Red Plastic

Cap for Male Plug

BODY SIZE	MODEL #
1/4"	QD-A-1/4-CAP
3/8"	QD-A-3/8-CAP
1/2"	QD-A-1/2-CAP
3/4"	QD-A-3/4-CAP
1"	QD-A-1-CAP

Red Plastic



Ordering Example:

Product Line Series Thread Plug/Socket
QD - **A** - **1NPT** - **F**

Model	Series	Thread	Plug/Socket
QD = Quick Disconnect	A = ISO-A	1/4 NPT 3/8 NPT 1/2 NPT 3/4 NPT 1 NPT 1.25 NPT 1.5 NPT 2 NPT	F = Female Socket M = Male Plug OR Dust Protectors PLUG = Plug for Female Socket CAP = Cap for Male Plug

DYNAMIC

FLUID COMPONENTS, INC.

Quick Disconnect ISO B Couplings

ISO B Couplings are used across the spectrum of hydraulic applications. Their general solidity permits the strenuous applications in semi conductor industry, pneumatic and hydraulic hand tools, food and bottling industries, boating, shipbuilding, offshore rigs, pharmaceutical industry, transport, hydro-electric power stations, etc.



Materials

- Zinc-plated Carbon Steel or Brass (Stainless Steel via special order)
- Standard Nitrile NBR Seals with PTFE Back-up Ring

Features

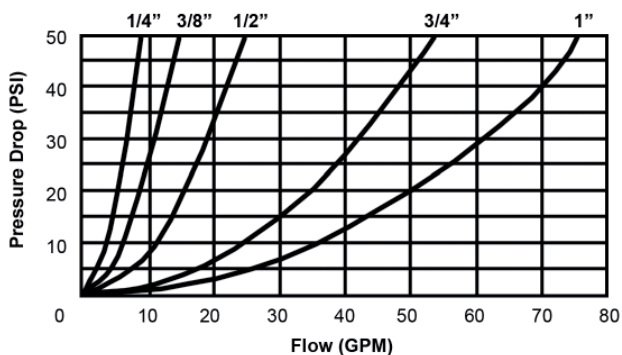
- Built in accordance with standard ISO7241-1B
- A variety of metal options allow for use with most fluids.
- Poppet valve allows for larger flow.
- Locking ball system allows quick connection & disconnection.
- Bi-directional flow
- Working temperature: -13°F + 257°F with standard seal

ISO SIZE	1/4"		3/8"		1/2"		3/4"		1"	
Material	Steel	Brass	Steel	Brass	Steel	Brass	Steel	Brass	Steel	Brass
Max Working Pressure (PSI)	3626	2900	3626	2900	3626	2610	3626	1885	3626	1885
Flow (GPM)										
Rated	3.2		6.1		11.9		28.0		49.9	
Max	6.3		12.2		23.8		58.1		68.7	
Liquid Spillage (ml)	1.0		2.4		3.9		11.0		19.0	

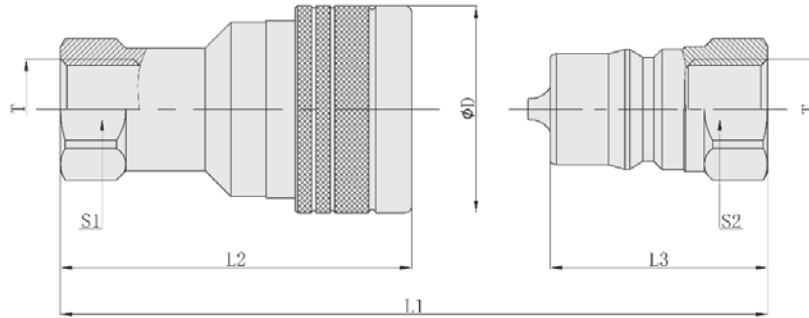
Interchangeable With

- Parker 60
- Faster HNV
- Eaton HK
- Stucchi IRB
- Snap Tite 72
- Safeway S10
- Hansen HK
- DNP PBV
- Holmbury IB
- Voswinkel IB
- Aeroquip FD45
- Dixon H
- Tomco THK

Pressure Drop



ISO B Series - Hydraulic Coupling (Brass & Steel) NPT Threads



BODY SIZE	FEMALE SOCKET MODEL #	MALE PLUG MODEL #	L1	L2	L3	ØD	S1	S2	T	Material
1/4"	QD-B-1/4NPT-F	QD-B-1/4NPT-M	2.79	2.26	1.38	1.10	0.75	0.75	1/4" NPT	Steel
3/8"	QD-B-3/8NPT-F	QD-B-3/8NPT-M	3.29	2.58	1.67	1.38	0.87	0.87	3/8" NPT	Steel
1/2"	QD-B-1/2NPT-F	QD-B-1/2NPT-M	3.68	2.96	1.83	1.73	1.06	1.06	1/2" NPT	Steel
3/4"	QD-B-3/4NPT-F	QD-B-3/4NPT-M	4.42	3.50	2.26	2.05	1.34	1.34	3/4" NPT	Steel
1"	QD-B-1NPT-F	QD-B-1NPT-M	5.18	4.19	2.58	2.36	1.61	1.61	1" NPT	Steel
1/4"	QD-B-B-1/4NPT-F	QD-B-B-1/4NPT-M	2.83	2.28	1.42	1.12	0.75	0.75	1/4" NPT	Brass
3/8"	QD-B-B-3/8NPT-F	QD-B-B-3/8NPT-M	3.08	2.51	1.54	1.44	1.06	0.87	3/8" NPT	Brass
1/2"	QD-B-B-1/2NPT-F	QD-B-B-1/2NPT-M	3.56	2.90	1.77	1.73	1.06	1.06	1/2" NPT	Brass
3/4"	QD-B-B-3/4NPT-F	QD-B-B-3/4NPT-M	4.33	3.54	2.17	2.13	1.31	1.34	3/4" NPT	Brass
1"	QD-B-B-1NPT-F	QD-B-B-1NPT-M	5.12	4.11	2.58	2.52	1.61	1.61	1" NPT	Brass

Dust Protectors

Plug for Female Socket

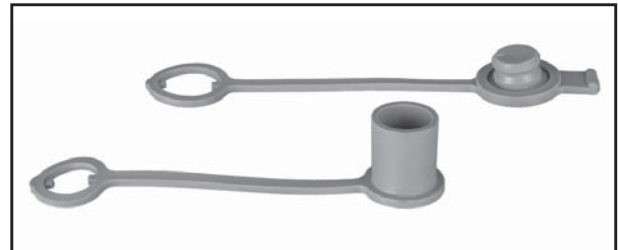
BODY SIZE	MODEL #
1/4"	QD-B-1/4-PLUG
3/8"	QD-B-3/8-PLUG
1/2"	QD-B-1/2-PLUG
3/4"	QD-B-3/4-PLUG
1"	QD-B-1-PLUG

Blue Plastic

Cap for Male Plug

BODY SIZE	MODEL #
1/4"	QD-B-1/4-CAP
3/8"	QD-B-3/8-CAP
1/2"	QD-B-1/2-CAP
3/4"	QD-B-3/4-CAP
1"	QD-B-1-CAP

Blue Plastic



Ordering Example:

Product Line: **QD** - Series: **B** - Material: **[]** - Thread: **1NPT** - Plug/Socket: **F**

Model	Series	Material	Thread	Plug/Socket
QD = Quick Disconnect	B = ISO-B	Omit = Steel B = Brass	1/4 NPT 3/8 NPT 1/2 NPT 3/4 NPT 1 NPT	F = Female Socket M = Male Plug OR Dust Protectors PLUG = Plug for Female Socket CAP = Cap for Male Plug

Quick Disconnect Wing Nut Couplings

Wing Nut Hydraulic Couplings are mainly applied in wet line kits, dump trailers, submersible pumps, engine test stands and lines of oil and gas field equipment.



Materials

- Brass Body with Zinc-plated Carbon Steel Wing
- Standard Nitrile NBR Seals with PTFE Back-up Ring

Features

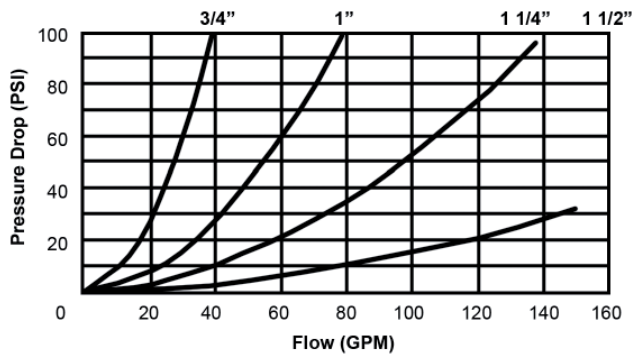
- Corrosion resistant brass body makes this coupling compatible with a broad range of media and provides versatility.
- Wing nut sleeve and hex nut design allows for connection by hand
- Screw system allows for connection either with male or female side under pressure.
- Working temperature: -13°F + 257°F with standard seal

BODY SIZE	3/4"	1"	1.25"	1.5"
Max Working Pressure (PSI)	2900	2900	2610	2465
Flow (GPM)				
Rated	28.0	50.2	69	100
Max	58.1	68.7	106	159
Liquid Spillage (ml)	0.15	0.40	0.65	0.85

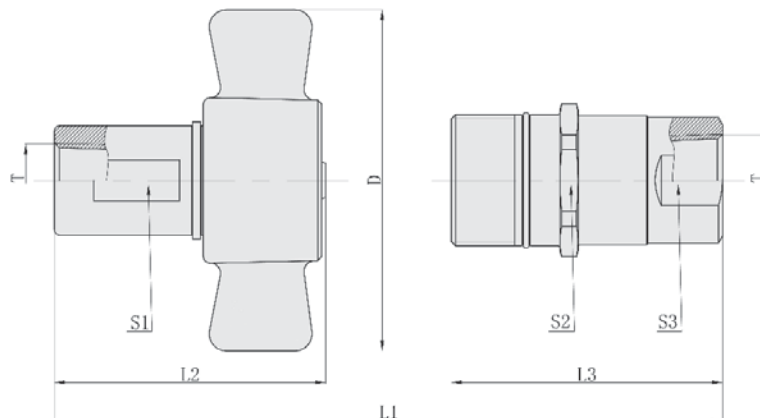
Interchangeable With

- Parker 6100
- Faster FB
- Dixon W
- Aeroquip 5100
- Safeway S51
- Hansen 96
- DNP VFF
- Eaton 5100
- Stucchi Wing
- Snap Tite 78
- Tomco A5100

Pressure Drop



Wing Nut Series - Hydraulic Coupling (Brass & Steel) NPT Threads



BODY SIZE	FEMALE SOCKET MODEL #	MALE PLUG MODEL #	L1	L2	L3	ØD	S1	S2	S3	T
3/4"	QD-W-1/2NPT-F	QD-W-1/2NPT-M	5.22	3.13	3.11	4.06	1.16	1.61	1.31	1/2" NPT
3/4"	QD-W-3/4NPT-F	QD-W-3/4NPT-M	5.22	3.13	3.11	4.06	1.16	1.61	1.31	3/4" NPT
1"	QD-W-1NPT-F	QD-W-1NPT-M	6.09	3.76	3.54	4.41	1.44	1.87	1.56	1" NPT
1.25"	QD-W-1.25NPT-F	QD-W-1.25NPT-M	6.34	3.94	3.71	5.28	1.78	2.13	1.88	1 1/4" NPT
1.5"	QD-W-1.5NPT-F	QD-W-1.5NPT-M	6.56	4.03	4.12	5.31	2.00	2.50	2.19	1 1/2" NPT

Dust Protectors

Plug for Female Socket

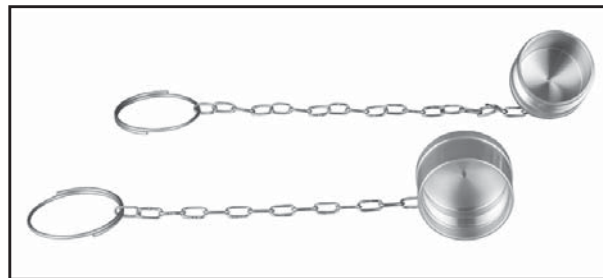
BODY SIZE	MODEL #
3/4"	QD-W-3/4-PLUG
1"	QD-W-1-PLUG
1.25"	QD-W-1.25-PLUG
1.5"	QD-W-1.5-PLUG

Brass

Cap for Male Plug

BODY SIZE	MODEL #
3/4"	QD-W-3/4-CAP
1"	QD-W-1-CAP
1.25"	QD-W-1.25-CAP
1.5"	QD-W-1.5-CAP

Brass



Ordering Example:

Product Line: **QD** - Series: **W** - Thread: **1NPT** - Plug/Socket: **F**

Model	Series	Thread	Plug/Socket
QD = Quick Disconnect	W = Wing Nut	1/2 NPT 3/4 NPT 1 NPT 1.25NPT 1.5NPT	F = Female Socket M = Male Plug OR Dust Protectors PLUG = Plug for Female Socket CAP = Cap for Male Plug

Quick Disconnect Ag Poppet Couplings

This series is mainly used in agricultural equipment, mobile and construction equipment.



Materials

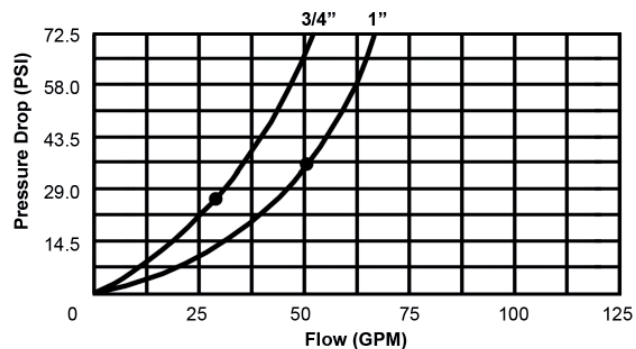
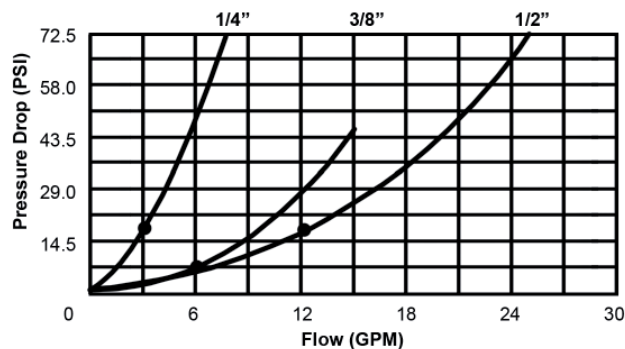
- Zinc-plated Carbon Steel Body
- Standard Nitrile NBR Seals with PTFE Back-up Ring

Features

- Produced in accordance with ISO 5675
- Locking ball system allows quick connection and disconnection
- Bi-directional flow
- Working temperature: -13°F + 257°F with standard seal

BODY SIZE	1/4"	3/8"	1/2"	3/4"	1"
Max Working Pressure (PSI)	5800	5075	3625	3625	3625
Flow (GPM)					
Rated	3.2	6.1	11.9	28.0	49.9
Max	6.3	12.2	23.8	50.2	66.0
Liquid Spillage (ml)	1.0	2.4	2.7	8.6	13.0

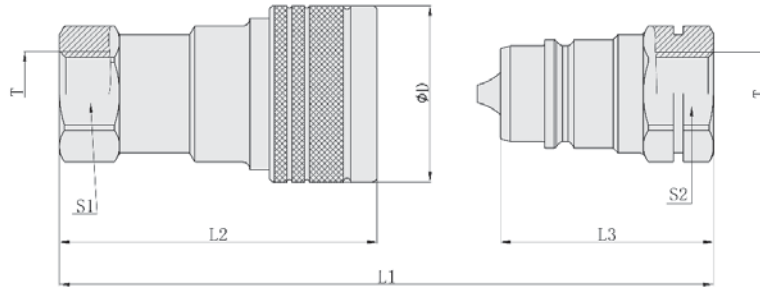
Pressure Drop



Interchangeable With

- Parker 4000
- DNP PDV
- Faster NV
- Holmbury DIN
- Dixon AG
- Stucchi IRV
- Aeroquip FD42
- Snap Tite 60
- Safeway S20
- Tomco P

Ag Poppet Series - Hydraulic Coupling (Steel) NPT Threads



BODY SIZE	FEMALE (SOCKET) MODEL #	MALE (PLUG) MODEL #	L1	L2	L3	ØD	S1	S2	T
1/4"	QD-AGP-1/4NPT-F	QD-AGP-1/4NPT-M	2.89	2.19	1.38	1.10	0.75	0.75	1/4" NPT
3/8"	QD-AGP-3/8NPT-F	QD-AGP-3/8NPT-M	3.37	2.50	1.67	1.38	0.94	0.94	3/8" NPT
1/2"	QD-AGP-1/2NPT-F	QD-AGP-1/2NPT-M	3.66	2.70	1.83	1.50	1.06	1.06	1/2" NPT
3/4"	QD-AGP-3/4NPT-F	QD-AGP-3/4NPT-M	4.47	3.32	2.26	1.89	1.34	1.34	3/4" NPT
1"	QD-AGP-1NPT-F	QD-AGP-1NPT-M	5.18	3.92	2.58	2.05	1.61	1.61	1" NPT

Dust Protectors

Plug for Female (Socket)

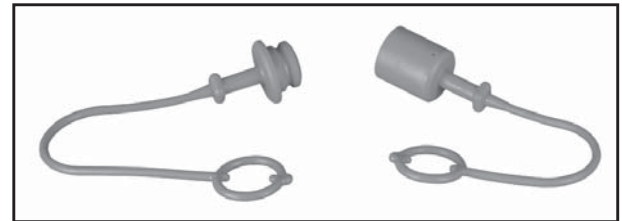
BODY SIZE	MODEL #
1/4"	QD-AGP-1/4-PLUG
3/8"	QD-AGP-3/8-PLUG
1/2"	QD-AGP-1/2-PLUG

Red Plastic

Cap for Male (Plug)

BODY SIZE	MODEL #
1/4"	QD-AGP-1/4-CAP
3/8"	QD-AGP-3/8-CAP
1/2"	QD-AGP-1/2-CAP

Red Plastic



Ordering Example:

Product Line	Series	Thread	Plug/Socket
QD	AGP	1/4NPT	F

Model	Series	Thread	Plug/Socket
QD = Quick Disconnect	AGP = Ag Poppet	1/4 NPT 3/8 NPT 1/2 NPT 3/4 NPT 1 NPT	F = Female Socket M = Male Plug OR Dust Protectors PLUG = Plug for Female Socket CAP = Cap for Male Plug

Quick Disconnect Ag Ball Couplings

This series is mainly used in agricultural equipment, mobile and construction equipment.



Materials

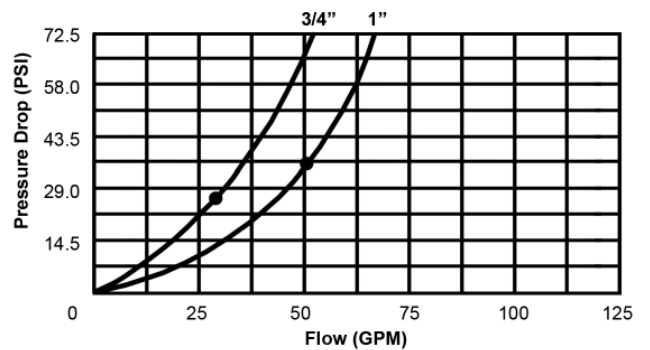
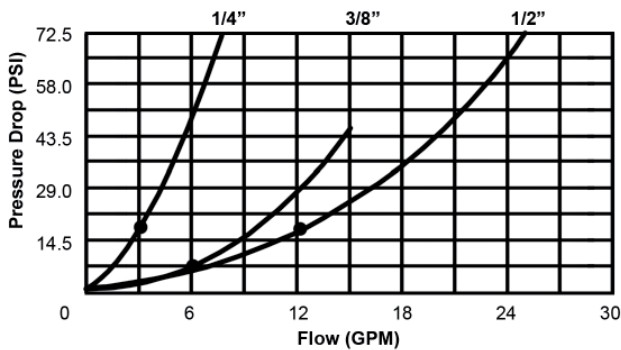
- Zinc-plated Carbon Steel Body
- Standard Nitrile NBR Seals with PTFE Back-up Ring

Features

- Produced in accordance with ISO 5675
- Locking ball system allows quick connection and disconnection
- Bi-directional flow
- Working temperature: -13°F + 257°F with standard seal

BODY SIZE	1/4"	3/8"	1/2"	3/4"	1"
Max Working Pressure (PSI)	4350	3625	2900	2900	2900
Flow (GPM)					
Rated	3.2	6.1	7.9	15.9	21.1
Max	5.3	9.2	14.5	31.7	42.3
Liquid Spillage (ml)	0.5	1.4	1.9	4.6	5.9

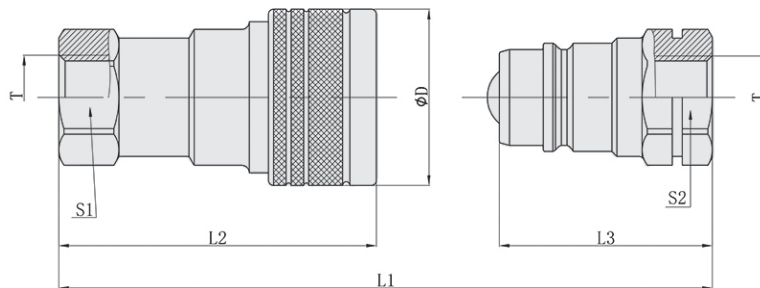
Pressure Drop



Interchangeable With

- Parker 4000
- Faster N
- Dixon R
- Snap Tite 21
- Safeway S20

Ag Ball Series - Hydraulic Coupling (Steel) NPT Threads



BODY SIZE	FEMALE (SOCKET) MODEL #	MALE (PLUG) MODEL #	L1	L2	L3	ØD	S1	S2	T
1/4"	QD-AGB-1/4NPT-F	QD-AGB-1/4NPT-M	2.89	2.19	1.38	1.10	0.75	0.75	1/4" NPT
3/8"	QD-AGB-3/8NPT-F	QD-AGB-3/8NPT-M	3.37	2.50	1.67	1.38	0.94	0.94	3/8" NPT
1/2"	QD-AGB-1/2NPT-F	QD-AGB-1/2NPT-M	3.66	2.70	1.83	1.50	1.06	1.06	1/2" NPT
3/4"	QD-AGB-3/4NPT-F	QD-AGB-3/4NPT-M	4.47	3.32	2.26	1.89	1.34	1.34	3/4" NPT
1"	QD-AGB-1NPT-F	QD-AGB-1NPT-M	5.18	3.92	2.58	2.05	1.61	1.61	1" NPT

Dust Protectors

Plug for Female (Socket)

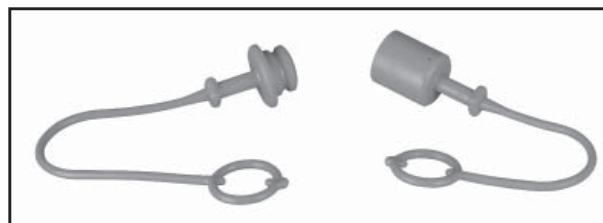
BODY SIZE	MODEL #
1/4"	QD-AGB-1/4-PLUG
3/8"	QD-AGB-3/8-PLUG
1/2"	QD-AGB-1/2-PLUG

Red Plastic

Cap for Male (Plug)

BODY SIZE	MODEL #
1/4"	QD-AGB-1/4-CAP
3/8"	QD-AGB-3/8-CAP
1/2"	QD-AGB-1/2-CAP

Red Plastic



Ordering Example:

Product Line: **QD** - Series: **AGB** - Thread: **1/4NPT** - Plug/Socket: **F**

Model	Series	Thread	Plug/Socket
QD = Quick Disconnect	AGB = Ag Ball	1/4 NPT 3/8 NPT 1/2 NPT 3/4 NPT 1 NPT	F = Female Socket M = Male Plug OR Dust Protectors PLUG = Plug for Female Socket CAP = Cap for Male Plug